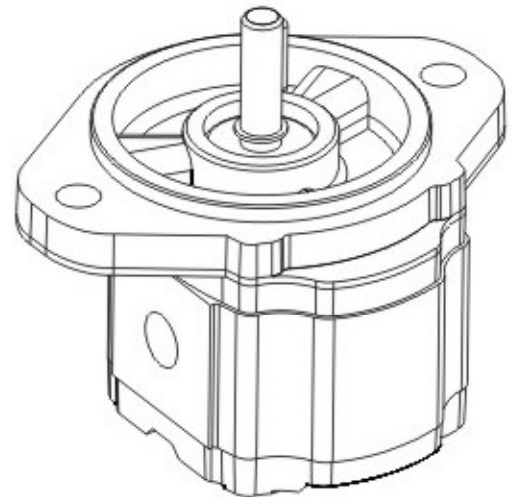
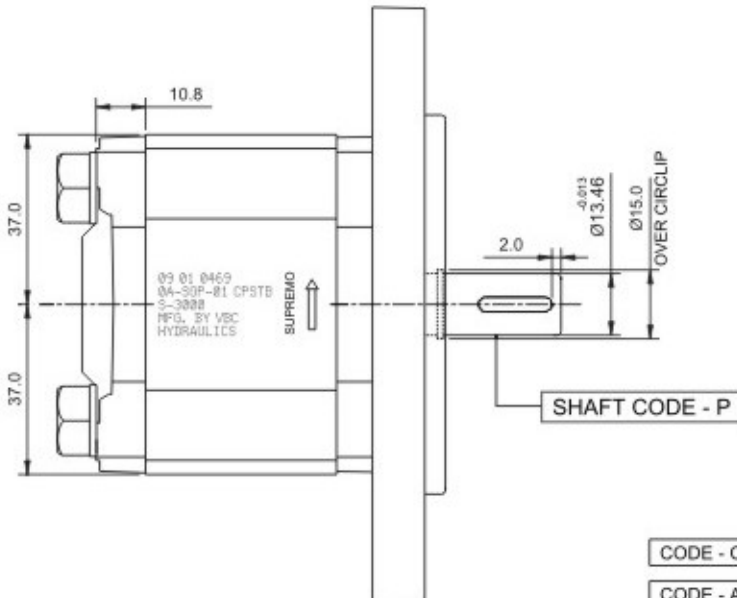


CLOCKWISE ROTATION SHOWN



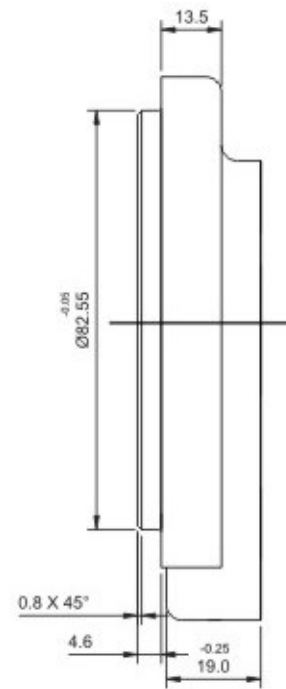
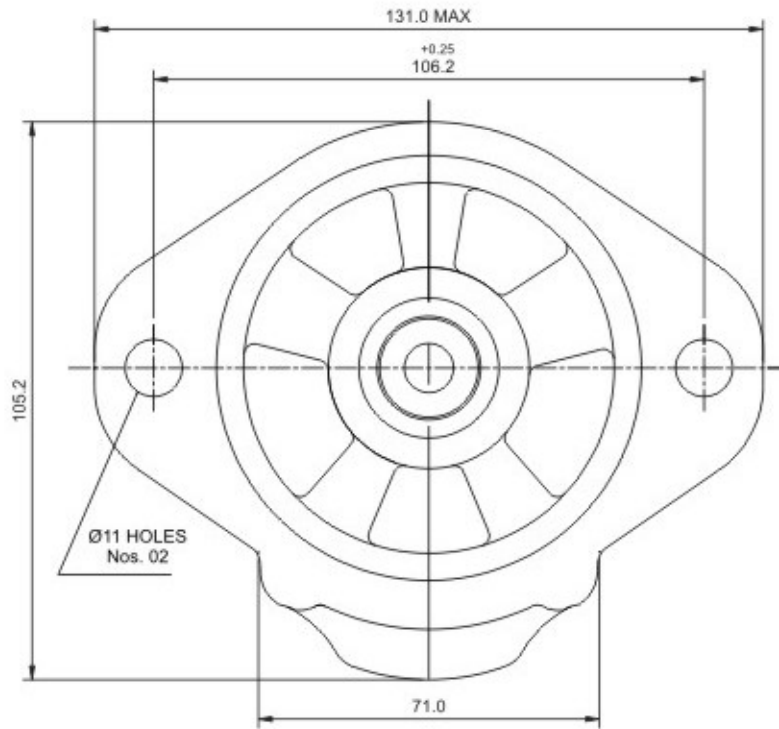
CODE - C CLOCKWISE  
CODE - A ANTI CLOCKWISE

Pump Type	Dimension X -1.27	Dimension Y -0.25
SGP - 0	76.5	38.2
SGP - 1	77.7	38.8
SGP - 2	78.7	39.3
SGP - 3	80.0	40.0
SGP - 4	82.0	41.0
SGP - 5	83.5	41.7
SGP - 6	85.0	42.5

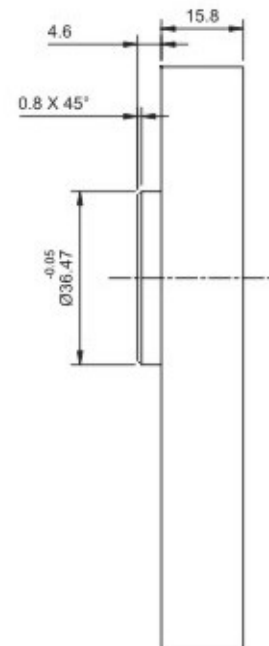
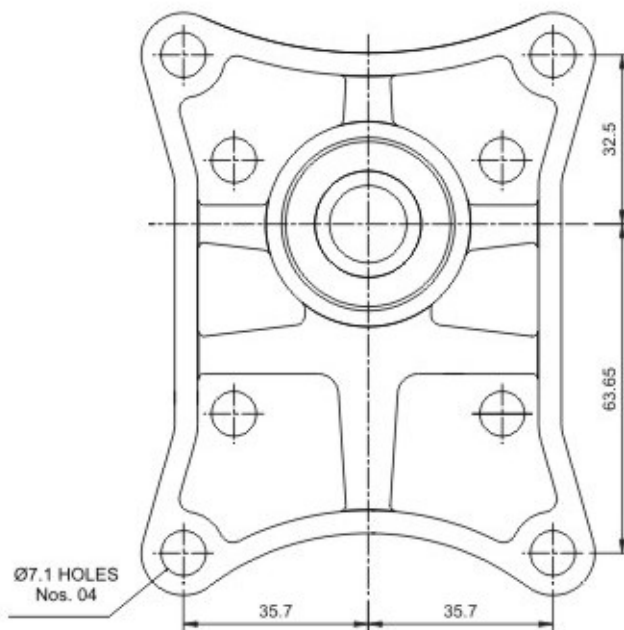
All Dimensions are in mm. Unless specified

# MOUNTING FLANGE

2 BOLT SAE A CODE - S (Aluminium)

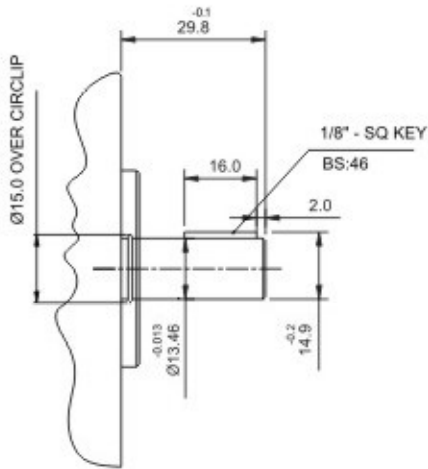


4 - BOLT CODE - D

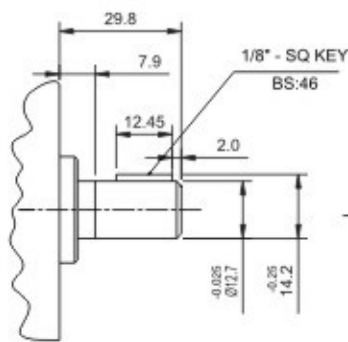


**DRIVE SHAFT**

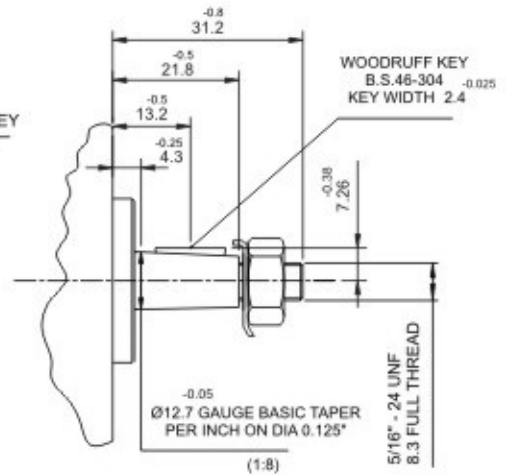
SHAFT CODE - P



SHAFT CODE - L

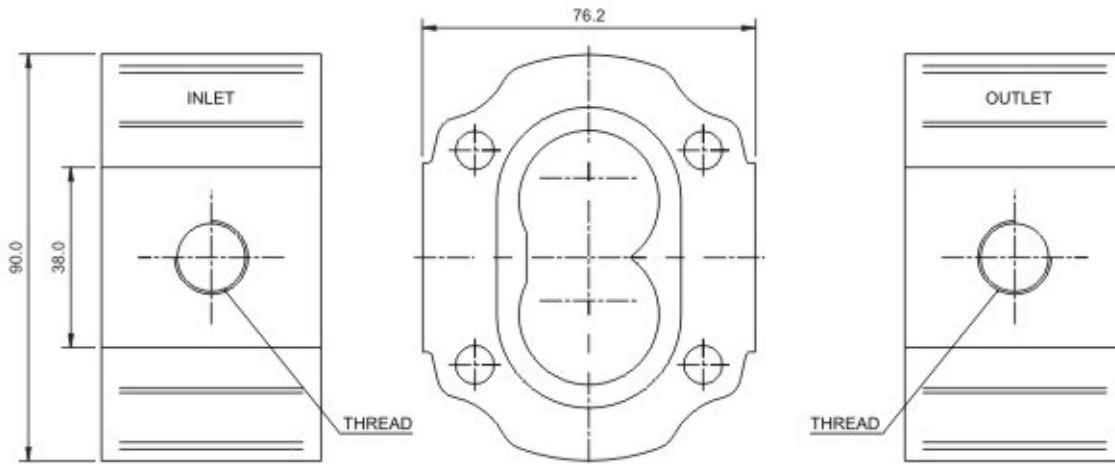


SHAFT CODE - T



**BODY PORT**

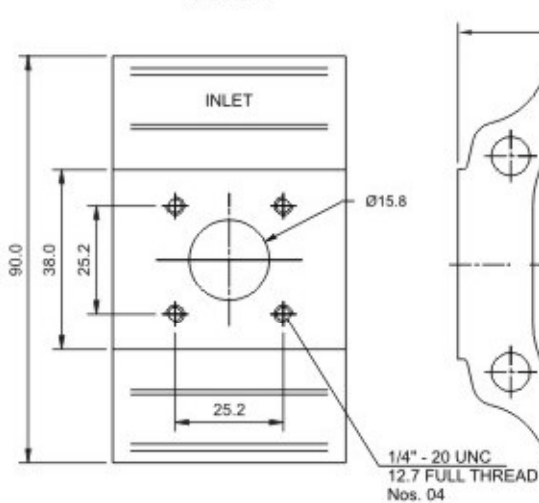
CODE - T



**INLET AND OUTLET PORTS**

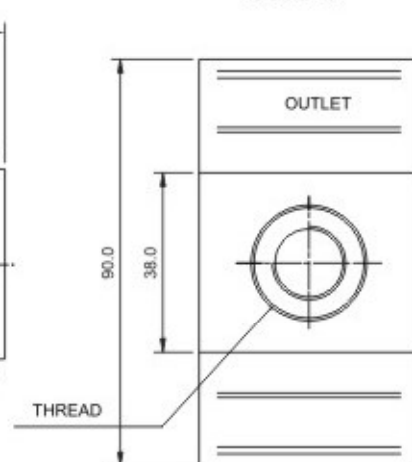
3/8" - BSP FOR PUMP TYPES OA SGP-0 TO SGP-04  
1/2" - BSP FOR PUMP TYPES OA SGP-05 TO SGP-06

CODE - F



INLET AND OUTLET  
FLANGE TYPE PORT

CODE - J



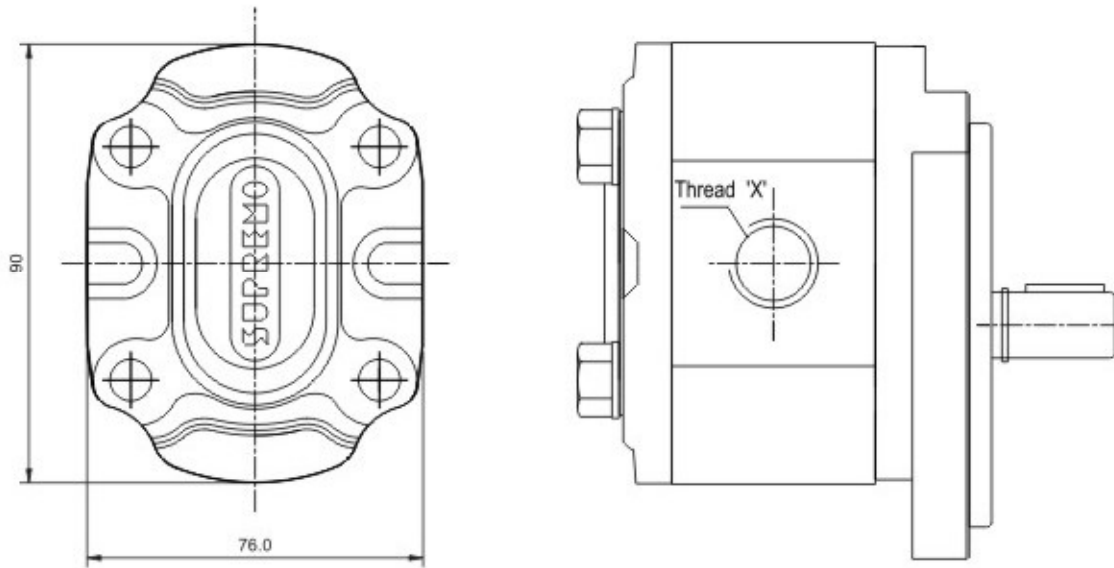
**INLET AND OUTLET PORTS**

7/8" - 14 UN FOR PUMP TYPES SGP-06  
INLET OUTLET 7/8 - 16UN

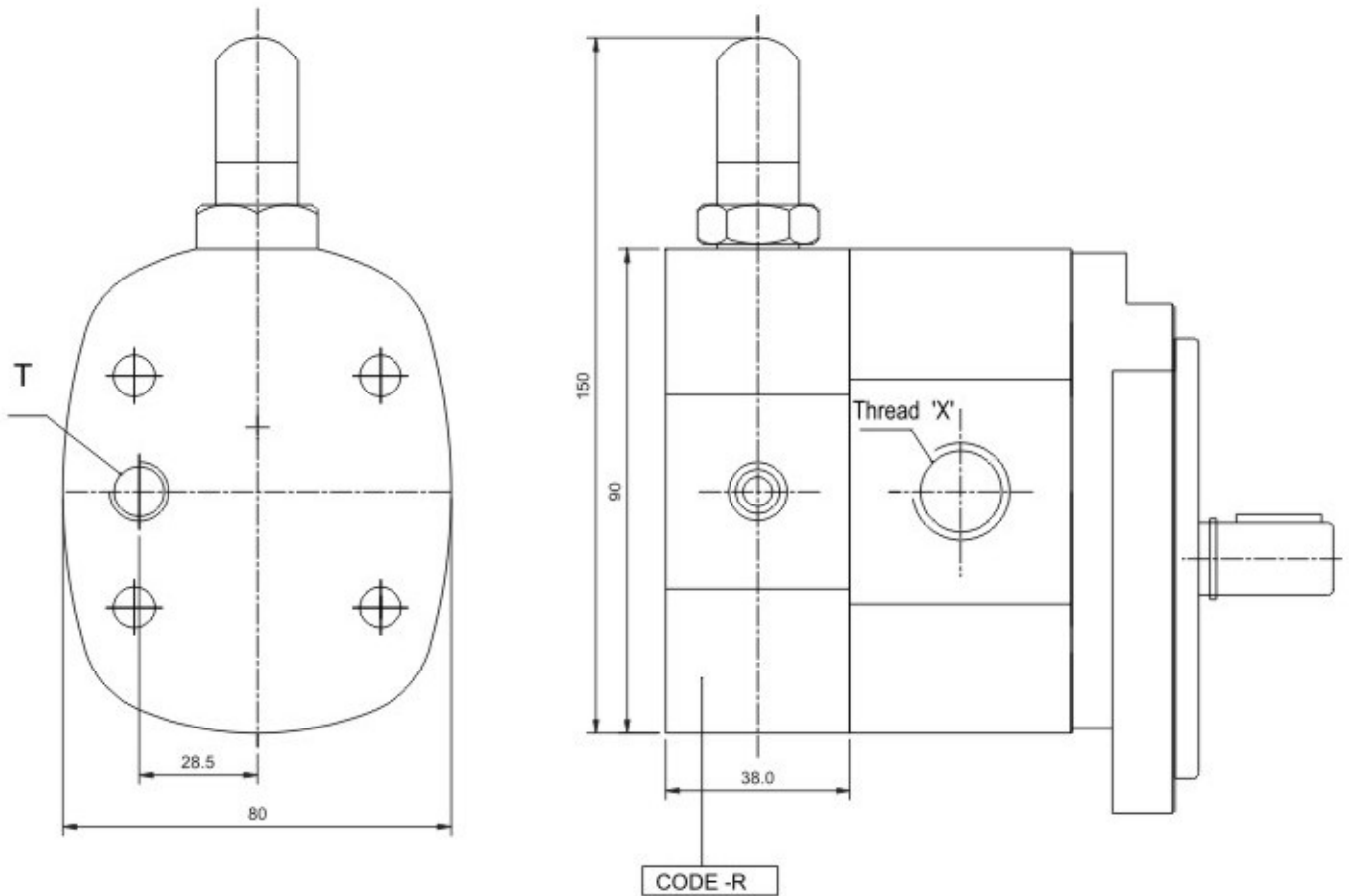


**END COVER CODE - B**

END COVER CODE - B (Aluminium)



**RELIEF VALVE SUITABLE FOR GROUP OA  
MOUNTED IN PLACE OF END COVER**



**SPECIFICATION DATA**

Pump Type	Theoretical Displacement	Nominal Delivery at 1450 rev/min.	Maximum Pressure	Max Speed at max Pressure rev / min.	Min Speed at max Continuous Pressure rev / min.	BODY PARTS CODE - T		WEIGHT in kg
	cm <sup>3</sup> / rev	l / min	bar			INLET BSP THREAD	OUTLET BSP THREAD	
SGP - 0	0.80	1.2	200	4000	600	3/8"	3/8"	1.90
SGP - 1	1.20	1.8	200	4000	600	3/8"	3/8"	1.95
SGP - 2	1.65	2.5	200	4000	600	3/8"	3/8"	2.00
SGP - 3	2.25	3.4	200	4000	600	3/8"	3/8"	2.05
SGP - 4	3.20	4.8	200	4000	600	3/8"	3/8"	2.07
SGP - 5	3.80	5.8	200	4000	600	1/2"	1/2"	2.10
SGP - 6	4.50	6.8	200	4000	600	1/2"	1/2"	2.12

Pressures with ENCL0 68 oil at 50° C

**PERFORMANCE CHART**

