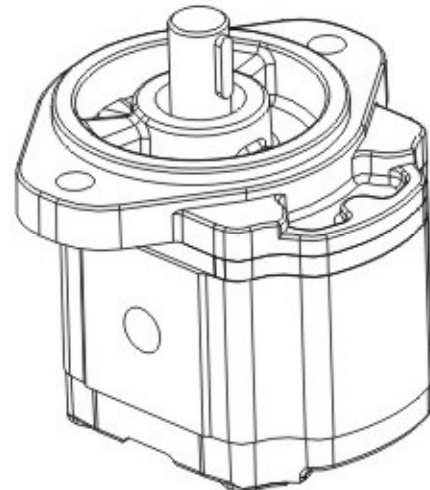
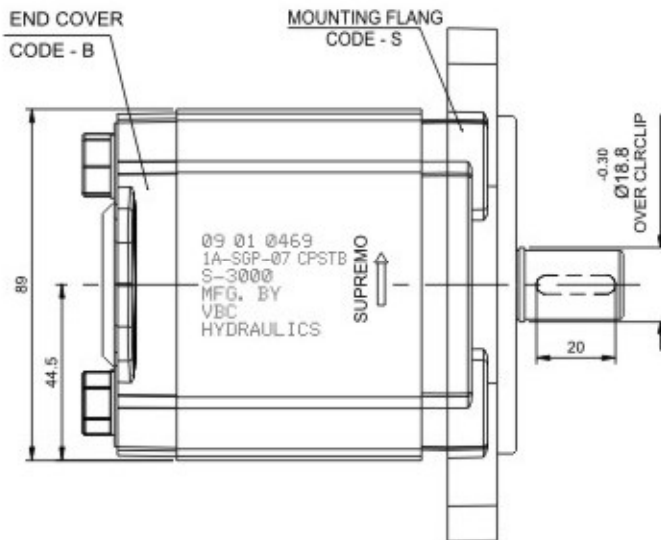


CLOCKWISE ROTATION SHOWN



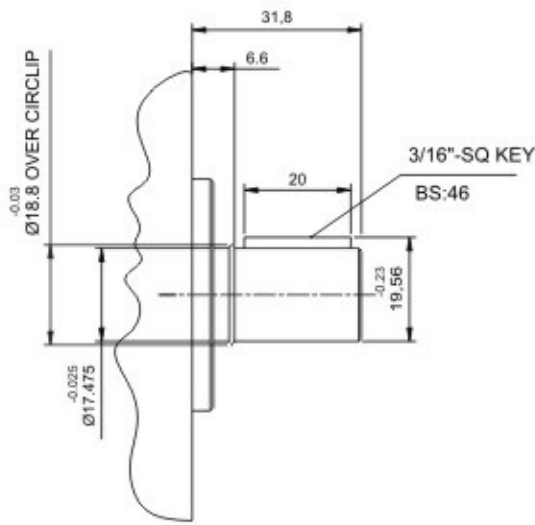
PUMP TYPE	DIMENSION - X -1.2 (TOL.)	DIMENSION - Y -0.76 (TOL.)
SGP - 07	41.9	88.5
SGP - 09	42.5	89.5
SGP - 12	44.2	93.0
SGP - 16	45.7	96.0
SGP - 20	54.7	114.0

PUMP TYPE	DIMENSION - X -1.2 (TOL.)	DIMENSION - Y -0.76 (TOL.)
SGP - 23	56.2	117.0
SGP - 27	57.7	120.0
SGP - 32	59.7	124.0
SGP - 40	63.3	131.0

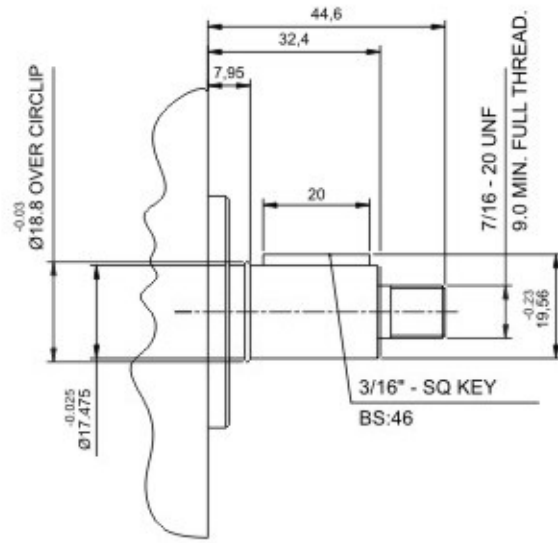
ALL DIMENSIONS ARE IN MM UNLESS SPECIFIED

DRIVE SHAFT

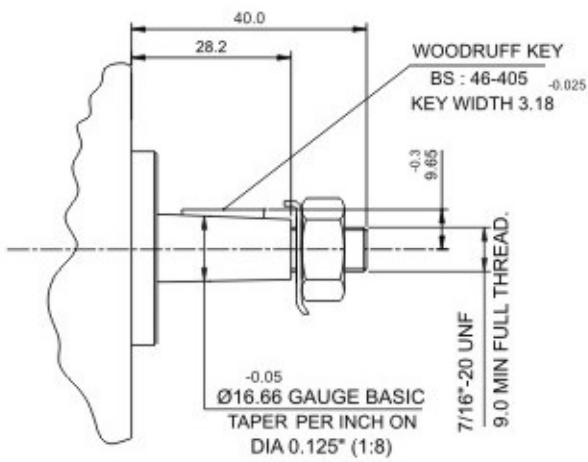
CODE - P



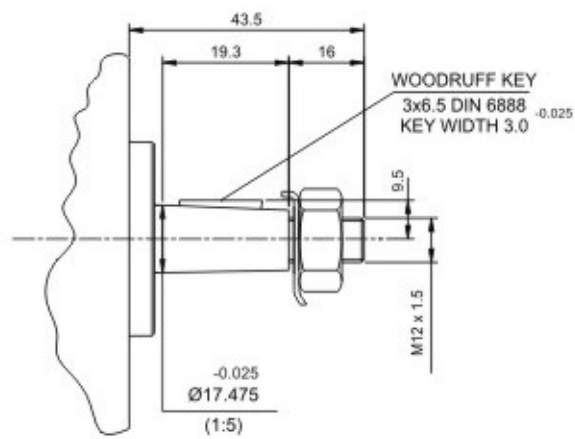
CODE - U



CODE - T

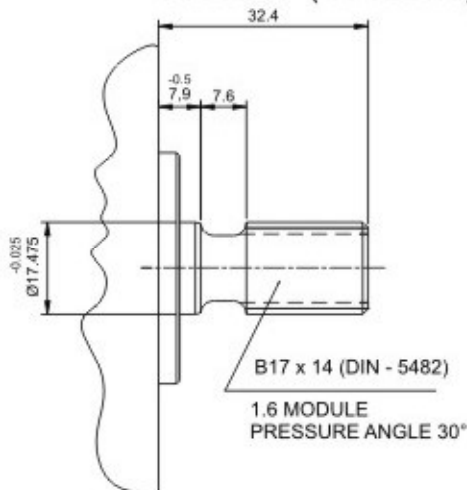


CODE - K

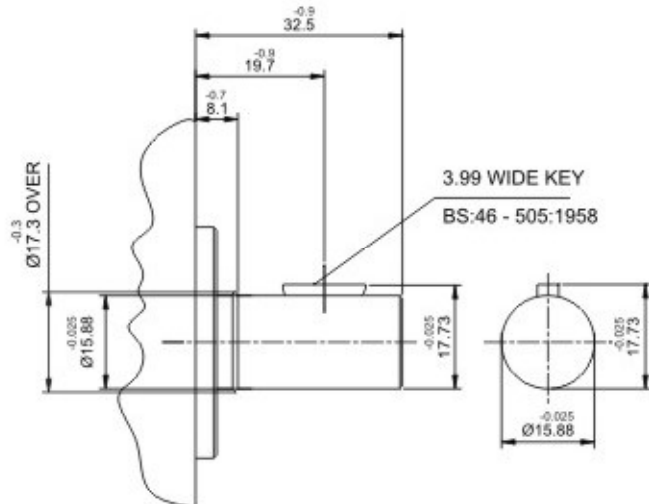


CODE - S (9 TEETH)

CODE - G (11 TEETH)



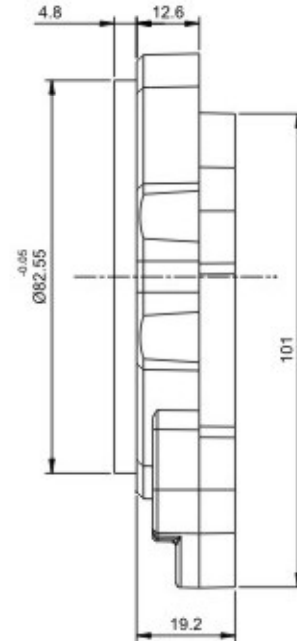
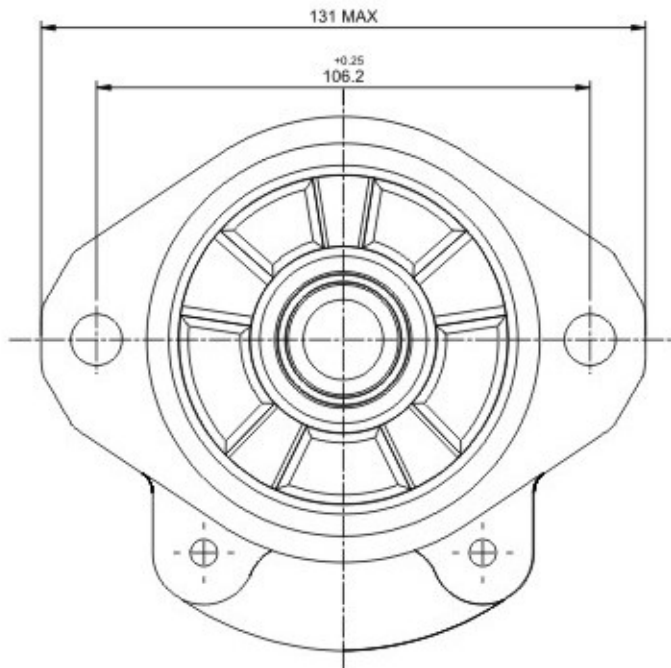
CODE - L



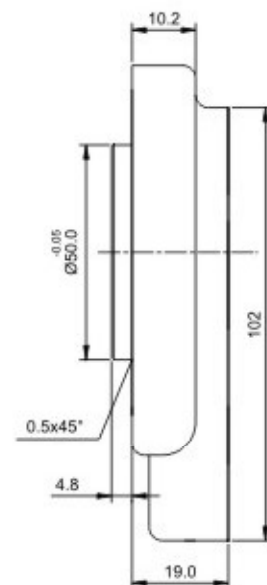
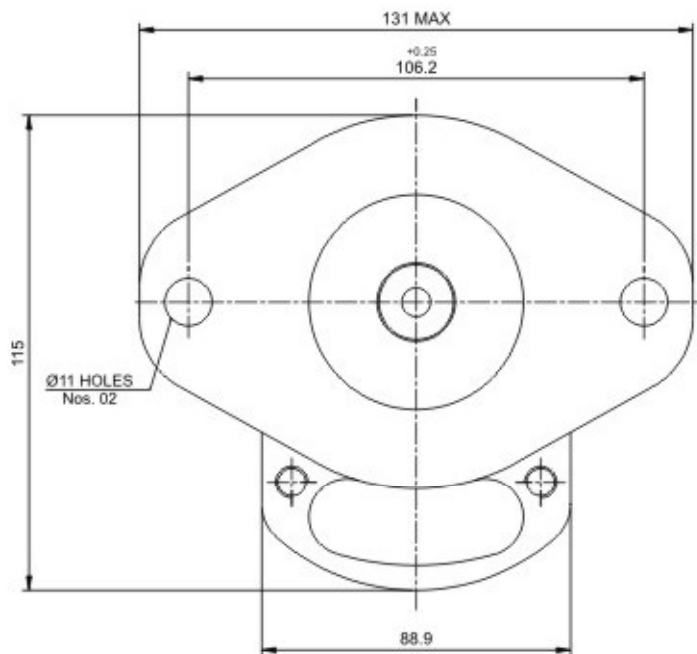
MOUNTING FLANGE

2 BOLT SAE-A CODE - S (Alluminium)

Available in SGP 07 to SGP 16



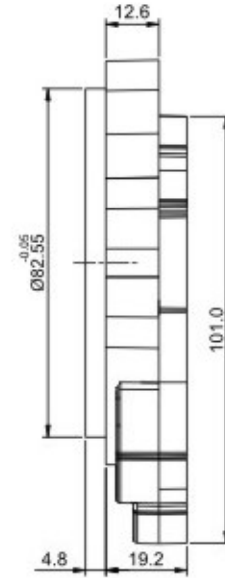
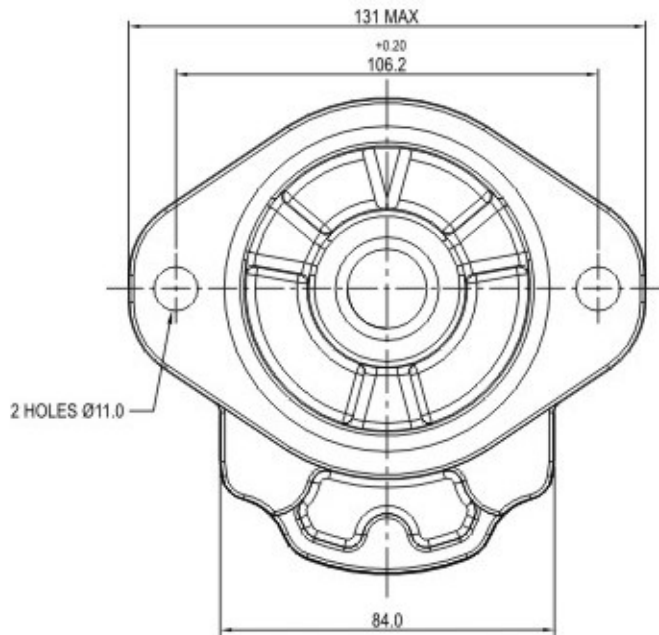
2 BOLT CODE - A



CODE - S

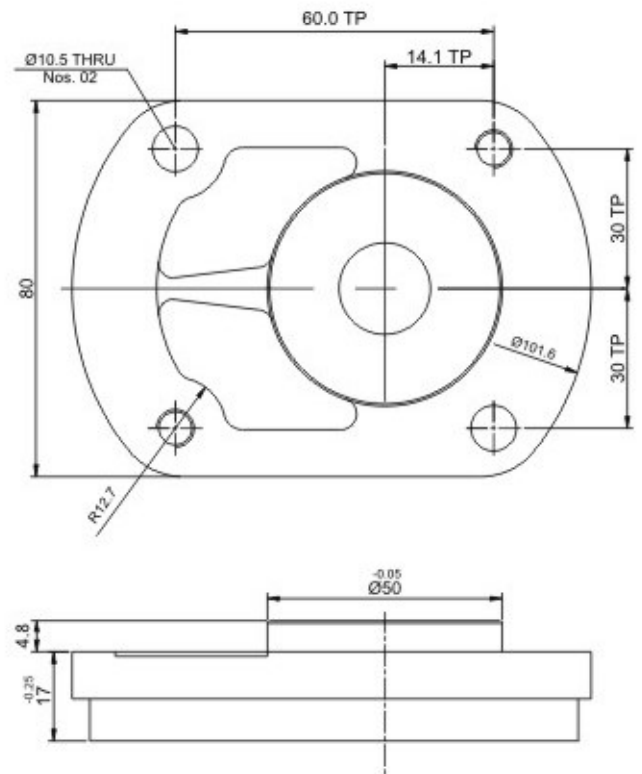
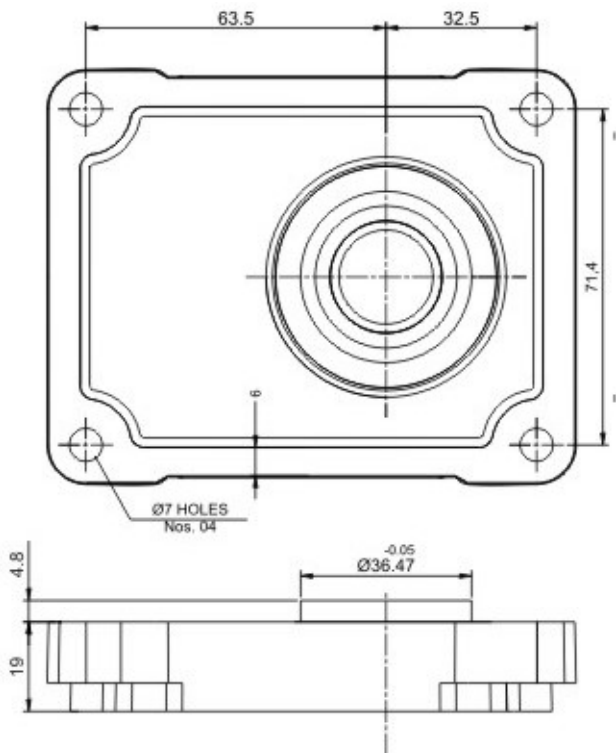
2 BOLT SAE A

Available with shaft code P,T,K,G and S



4 BOLT CODE - D

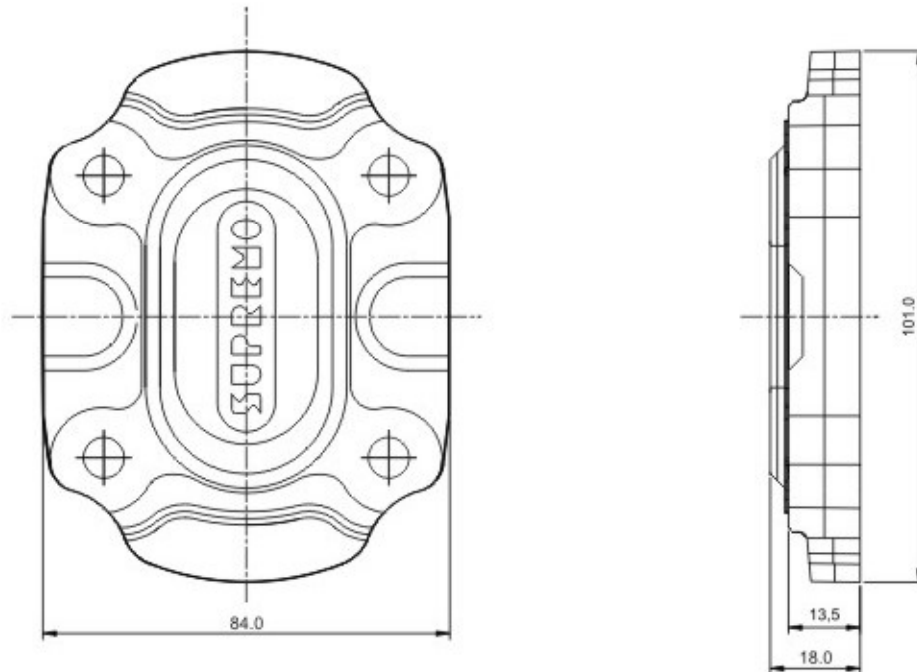
4 BOLT CODE - K



END COVER CODE - B

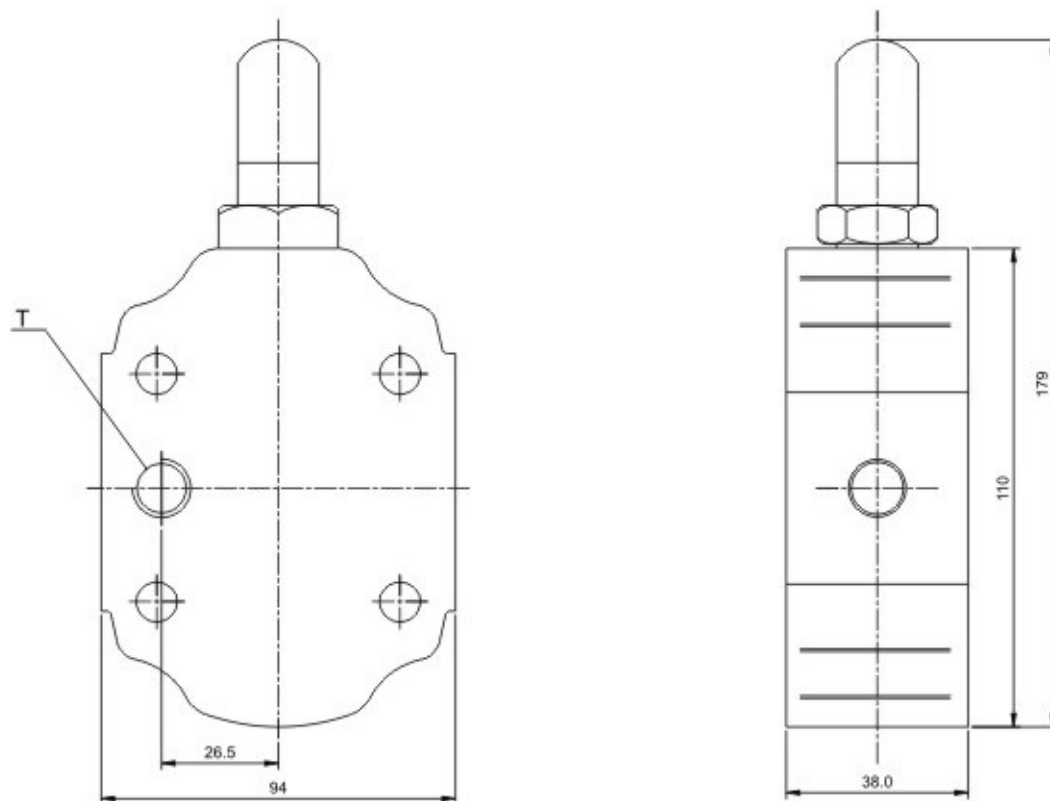
END COVER CODE - B (Cast Iron)

END COVER CODE - B (Aluminium) for SGP 07 to SGP 16

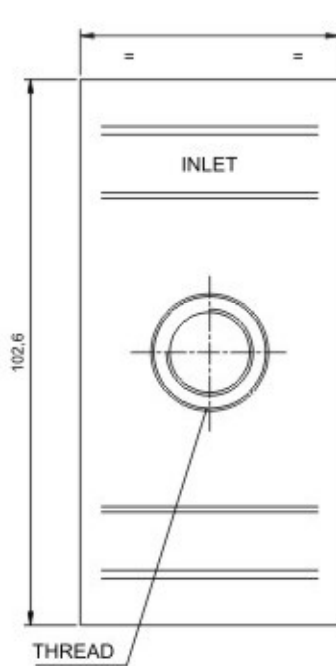


RELIEF VALVE CODE - R

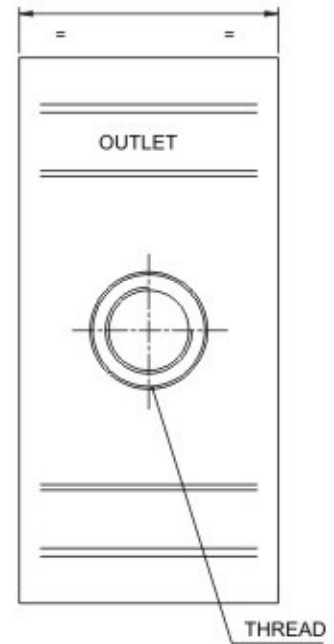
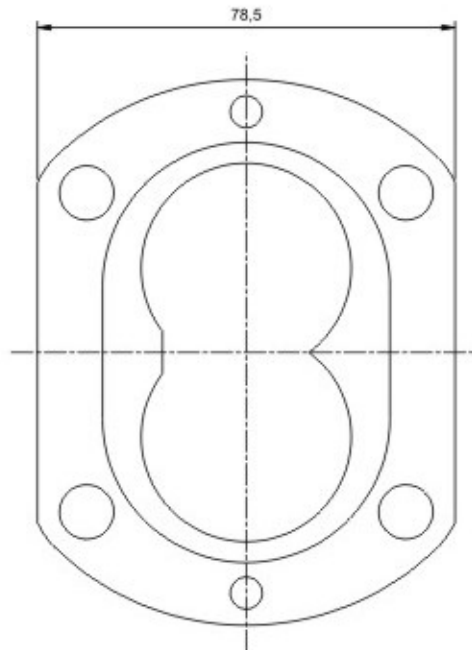
MOUNTED IN PLACE OF END COVER



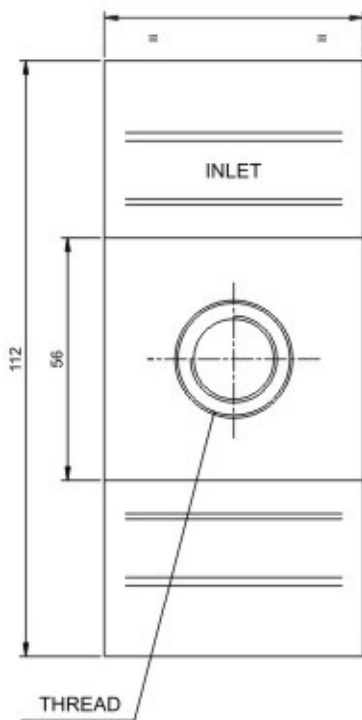
CODE - J



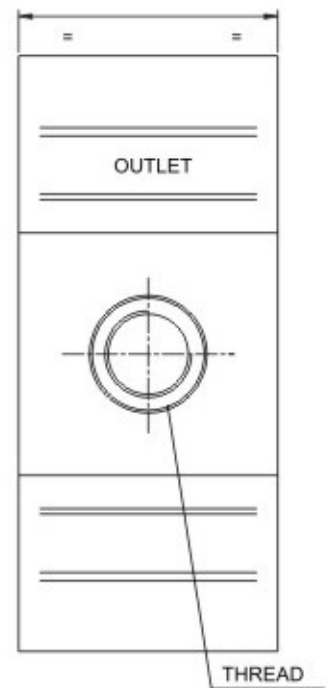
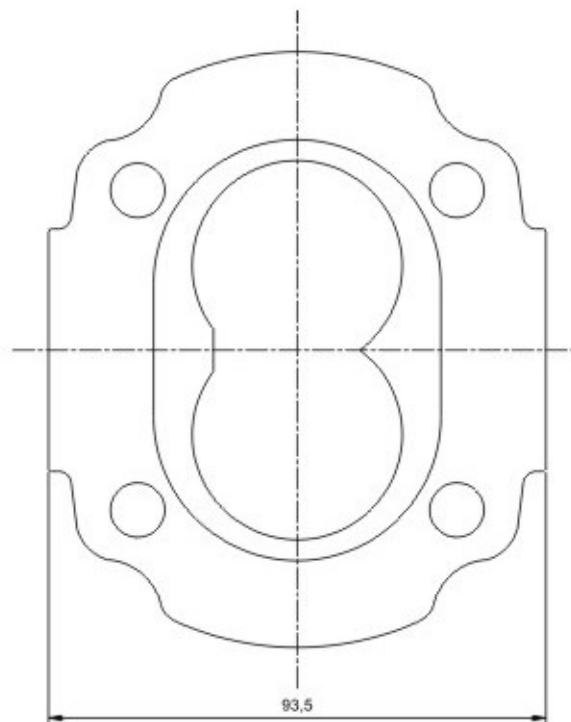
1 - 1/16" - 12 UN FOR PUMP
TYPES 1A SGP-07 TO SGP-16



7/8" - 14 UN FOR PUMP
TYPES 1A SGP-07 TO SGP-16



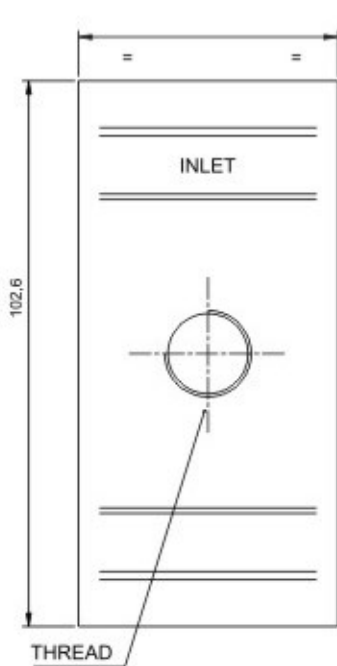
1 - 5/16" - 12 UN FOR PUMP
TYPES 1A SGP-20 TO SGP-40



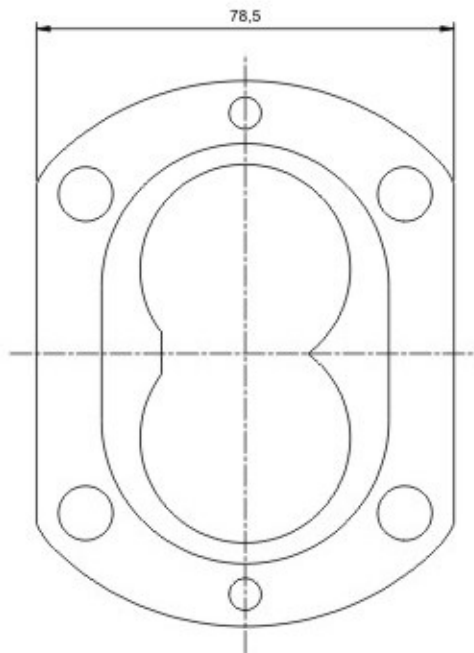
1 - 1/16" - 12 UN FOR PUMP
TYPES 1A SGP-20 TO SGP-40



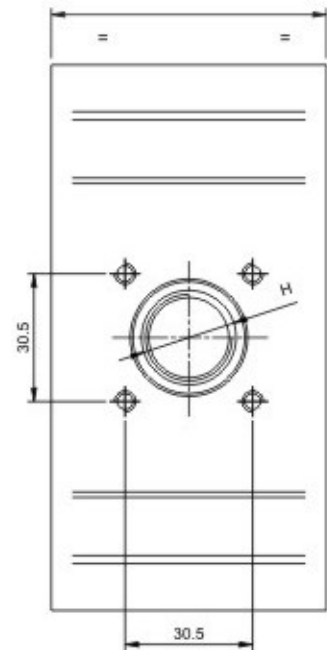
CODE - T



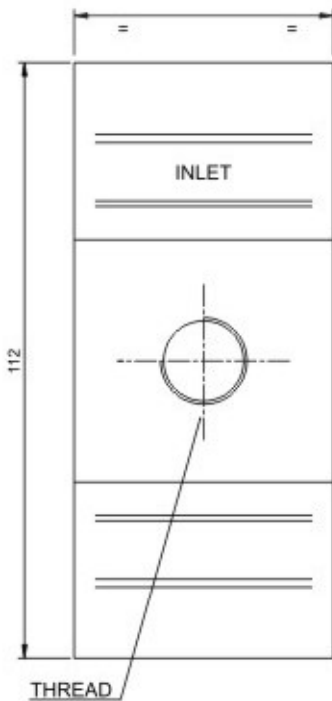
INLET & OUTLET PORTS
1/2" - BSP FOR PUMP TYPES
1A SGP-07 TO SGP-12



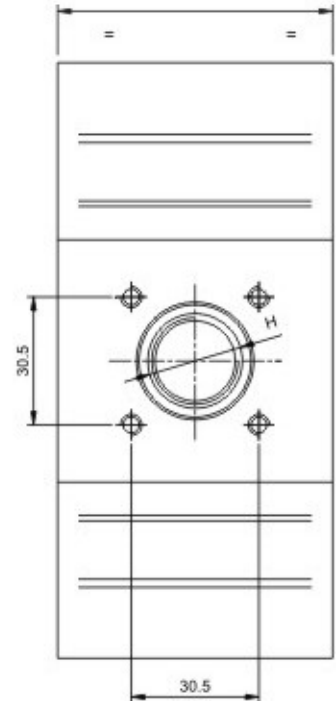
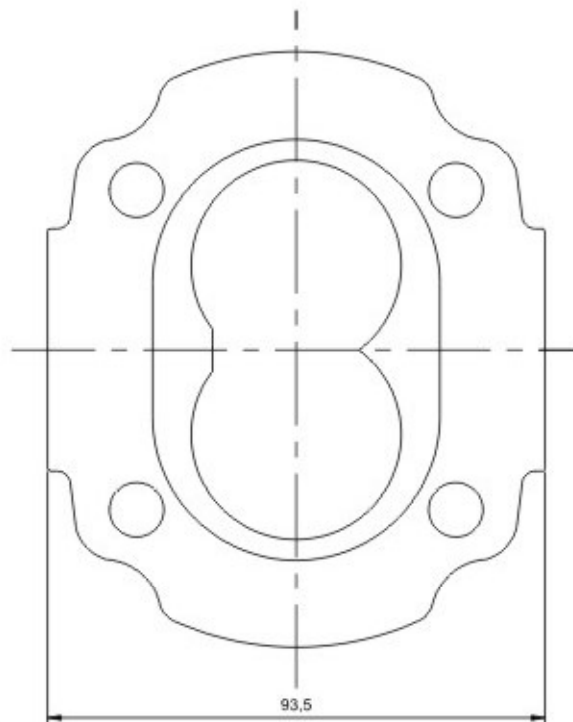
CODE - F



INLET & OUTLET PORTS
 $\varnothing H = 17.3$ PUMP TYPES
1A SGP-07 TO SGP-16



INLET & OUTLET PORTS
3/4" - BSP FOR PUMP TYPES
1A SGP-16 TO SGP-40
OUTLET 1/2" - BSP FOR 1A SGP-16 ONLY



INLET & OUTLET PORTS
 $\varnothing H = 20.3$ PUMP TYPES
1A SGP-20 TO SGP-40



SPECIFICATION DATA

Pump Type	Theoretical Displacement	Nominal Delivery at 1450 rev/min.	Maximum Pressure	Max Speed at max Pressure rev / min.	Min Speed at max Continuous Pressure rev / min.	INLET	OUTLET	WEIGHT in kg
	cm ³ / rev	l / min	bar					
SGP - 07	5.10	7.70	207	3500	600	1/2" BSP	1/2" BSP	2.92
SGP - 09	6.00	9.10	207	3500	600	1/2" BSP	1/2" BSP	2.94
SGP - 12	8.50	12.70	207	3500	600	1/2" BSP	1/2" BSP	3.02
SGP - 16	11.00	16.40	207	3500	600	3/4" BSP	1/2" BSP	3.08
SGP - 20	13.50	20.00	207	3500	600	3/4" BSP	3/4" BSP	3.97
SGP - 23	15.70	23.60	207	3500	600	3/4" BSP	3/4" BSP	4.01
SGP - 27	18.20	27.30	207	3500	600	3/4" BSP	3/4" BSP	4.10
SGP - 32	21.80	32.70	150	3500	600	3/4" BSP	3/4" BSP	4.21
SGP - 40	27.30	40.90	130	2400	600	3/4" BSP	3/4" BSP	4.43

Pressures with ENCLO 68 oil at 50° C

PERFORMANCE

