

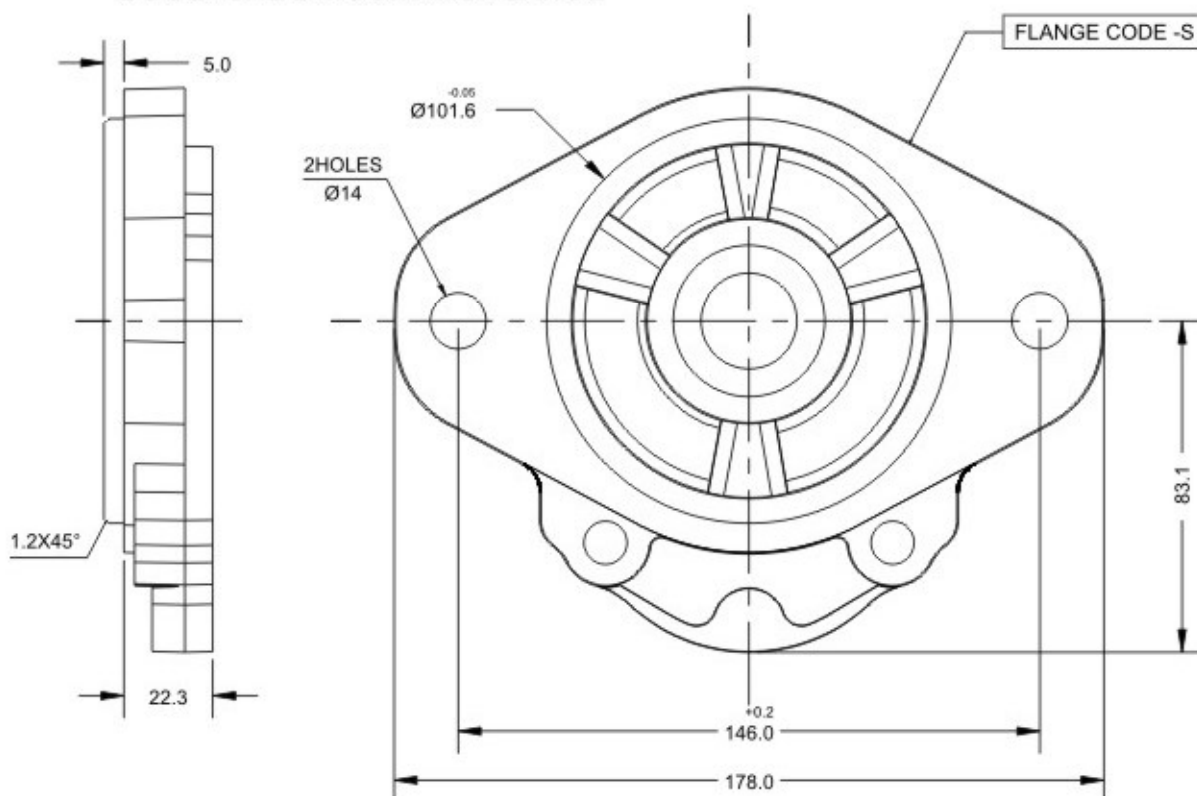
Pump Type	Dimension X -1.27	Dimension Y -0.25
SGP - 22	55.0	112.7
SGP - 32	57.5	117.5
SGP - 41	60.0	122.3
SGP - 47	68.7	140.0
SGP - 54	70.5	143.5

Pump Type	Dimension X -1.27	Dimension Y -0.25
SGP - 66	74.0	149.6
SGP - 71	75.2	152.7
SGP - 85	78.0	158.4
SGP - 100	75.5	155.8

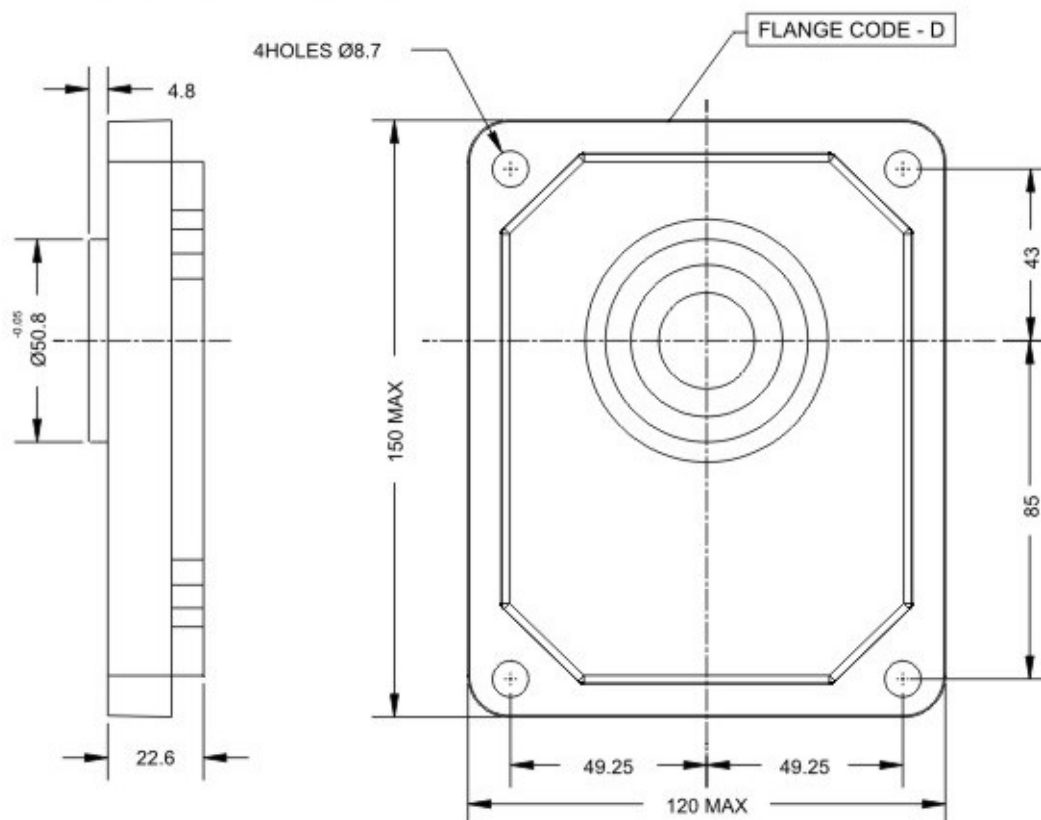
ALL DIMENSION ARE IN MM

MOUNTING FLANGE

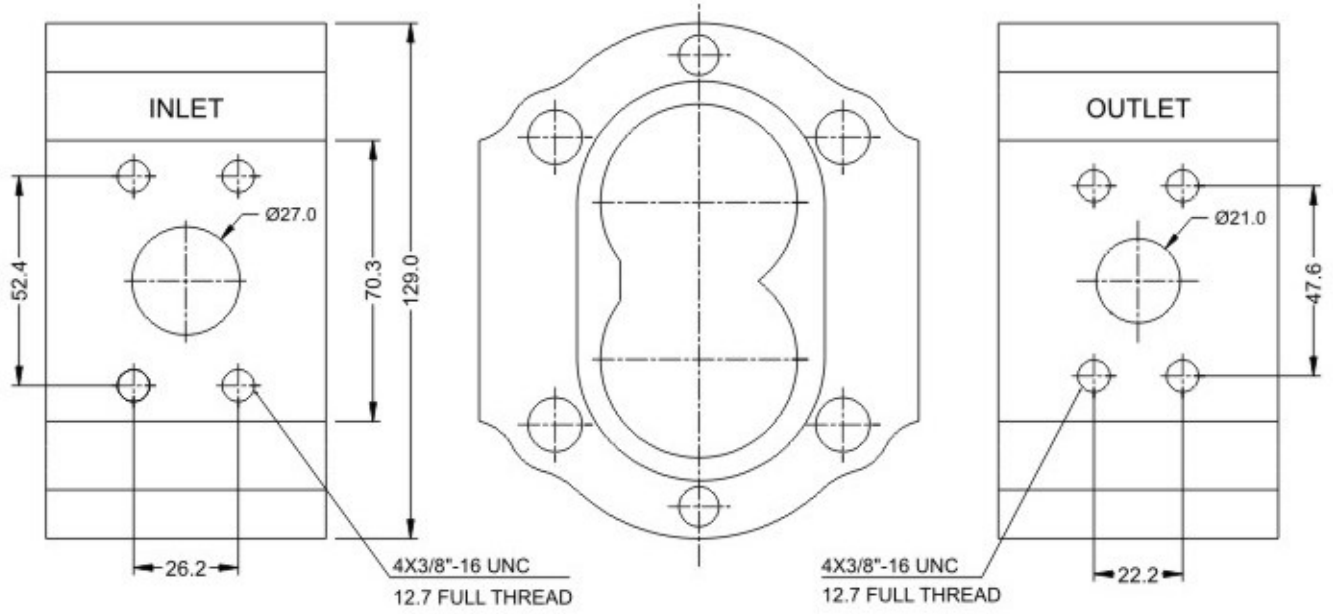
2 BOLT SAE B MOUNTING FLANGE



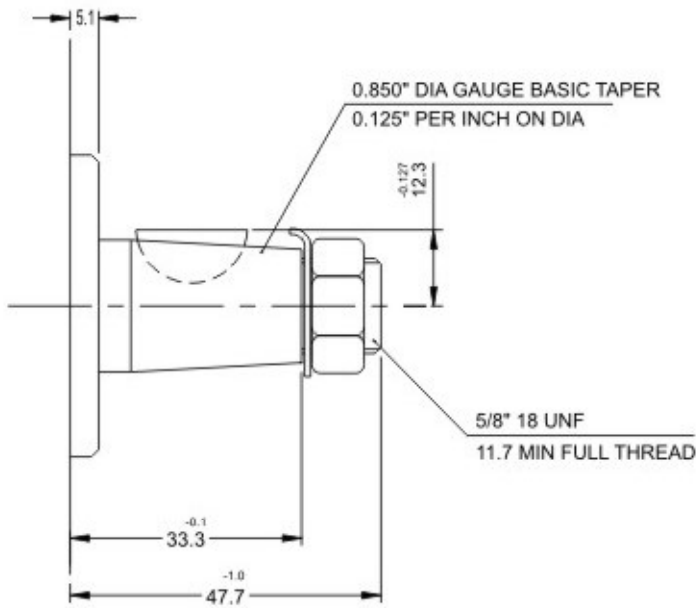
4 BOLT MOUNTING FLANGE



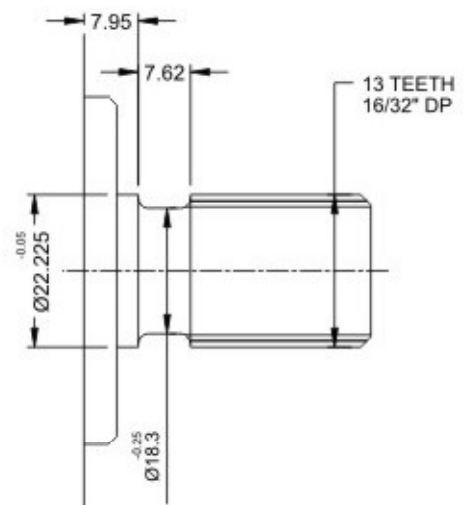
BODY PORT
CODE - S



DRIVE SHAFT



SHAFT CODE - T



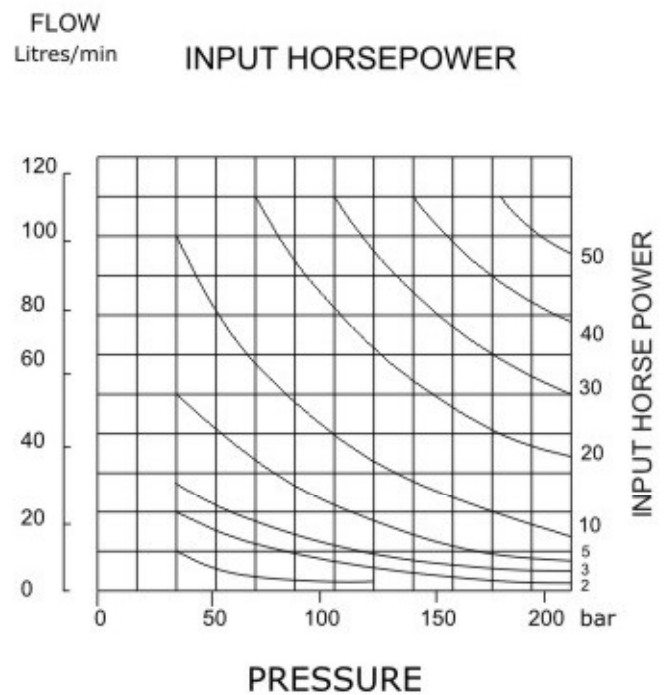
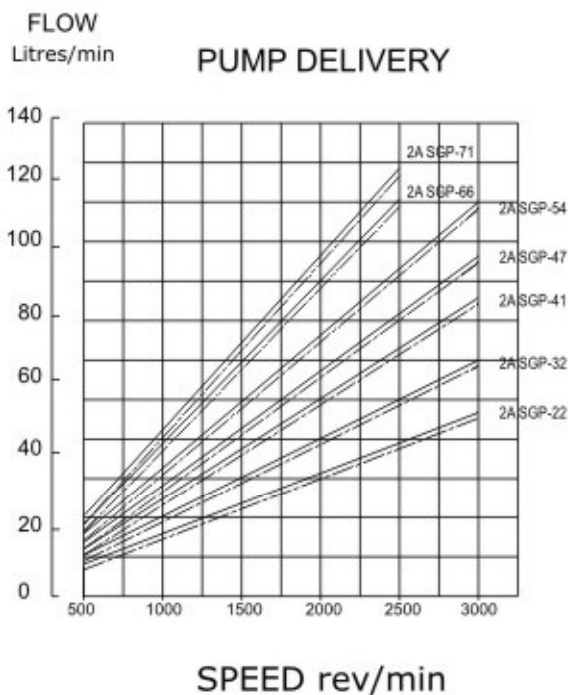
SHAFT CODE - S

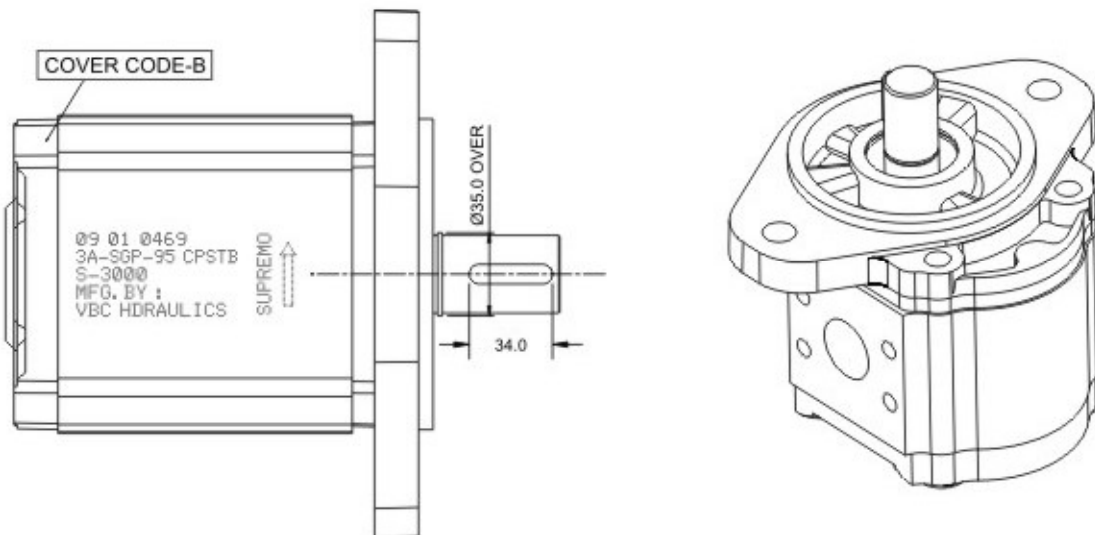
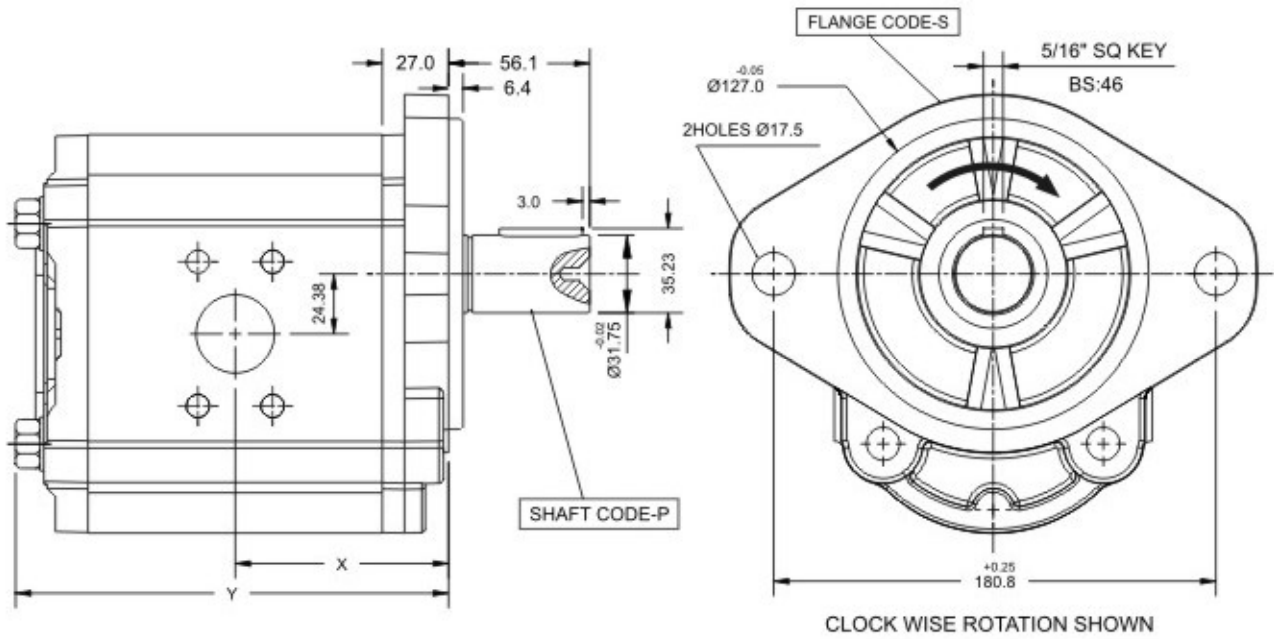
SPECIFICATION DATA

Pump Type	Theoretical Displacement	Nominal Delivery at 1450 rev/min.	Maximum Pressure	Max Speed at max Pressure rev / min.	Min Speed at max Continuous Pressure rev / min.	Inlet BSP Thread	Outlet BSP Thread	Weight in Kgs.
	cm ³ / rev	l / min	bar					
SGP - 22	16.67	22.7	207	3500	650	1"	3/4"	7.40
SGP - 32	22.73	32.0	207	3500	650	1"	3/4"	7.50
SGP - 41	28.79	41.0	207	3500	650	1"	3/4"	7.70
SGP - 47	33.74	47.7	207	3500	650	1.1/4"	3/4"	8.60
SGP - 54	37.88	54.5	207	3500	650	1.1/4"	3/4"	8.70
SGP - 66	45.68	66.5	207	3500	650	1.1/4"	3/4"	8.80
SGP - 71	49.40	71.8	170	2500	650	1.1/2"	3/4"	9.15
SGP - 85	59.14	85.6	170	2500	650	1.1/2"	1"	9.5
SGP - 100	66.67	100	150	2500	650	1.1/2"	1"	9.5

Pressures with ENCLO 68 oil at 50° C

PERFORMANCE CHART

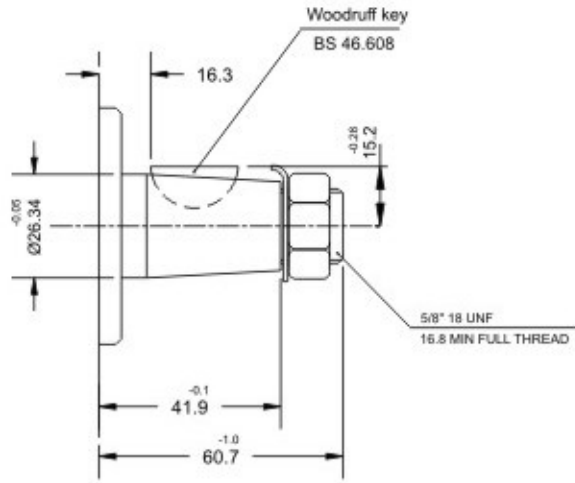




Pump Type	Dimension X -1.27	Dimension Y -0.25
SGP - 68	68.7	136.3
SGP - 81	71.2	141.3
SGP - 95	73.7	146.3
SGP - 113	76.7	152.3
SGP - 136	80.7	160.3
SGP - 150	83.2	165.3
SGP - 173	87.2	173.3
SGP - 225	97.2	193.3

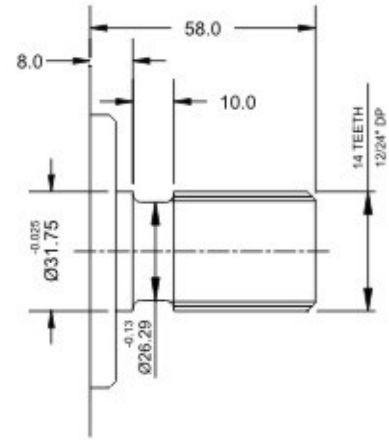
ALL DIMENSIONS ARE IN MM

TAPER SHAFT CODE - T



SHAFT CODE - T

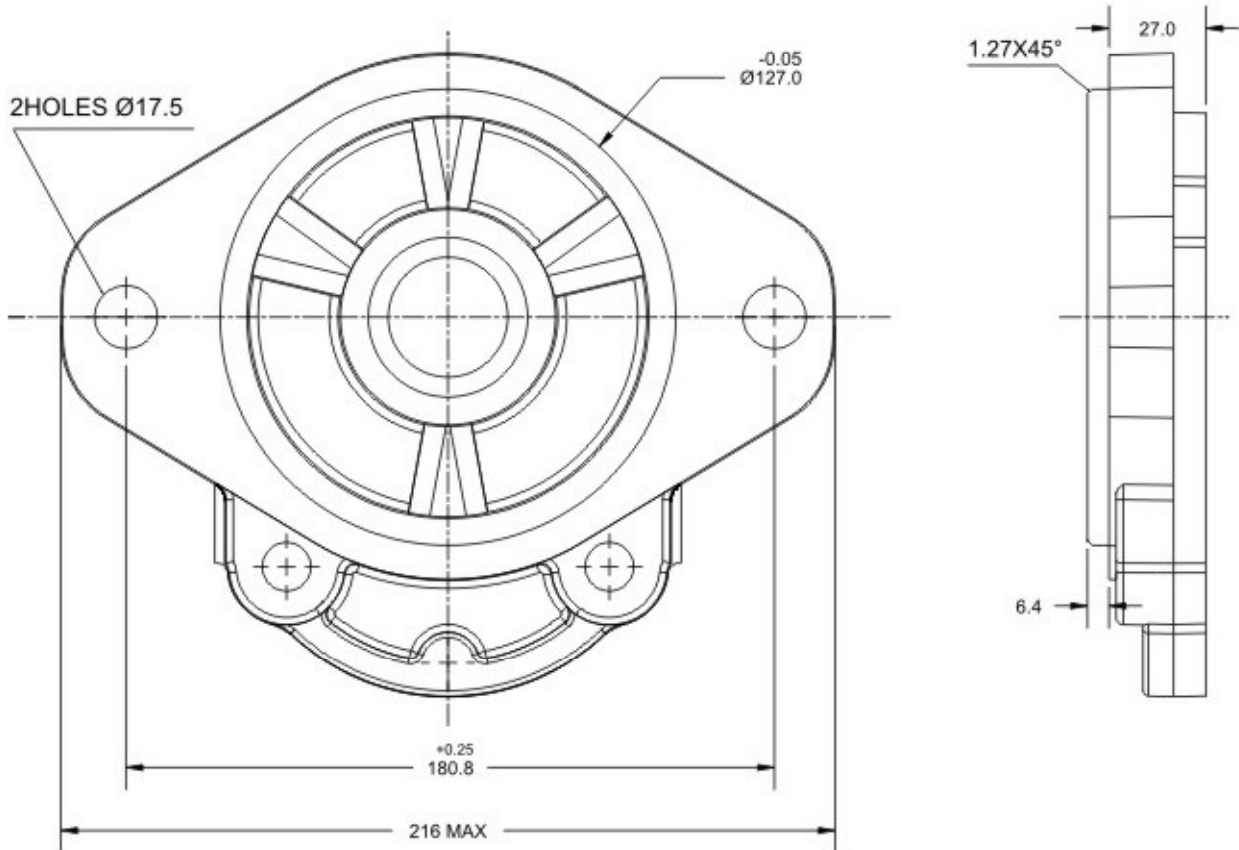
SPLINED SHAFT CODE - S



SHAFT CODE - S

MOUNTING FLANGE

2-BOLT SAE C MOUNTING FLANGE CODE - S



FLANGE CODE - S