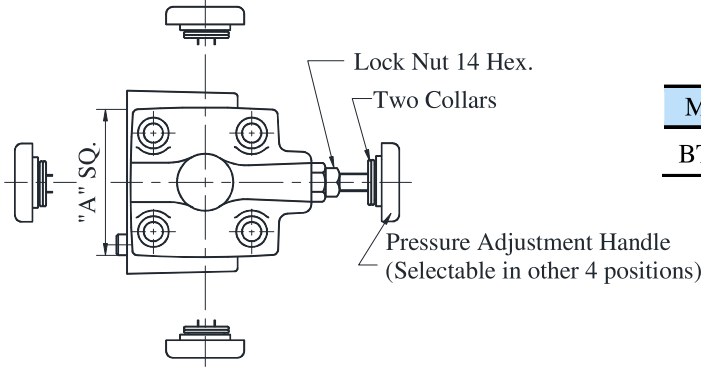


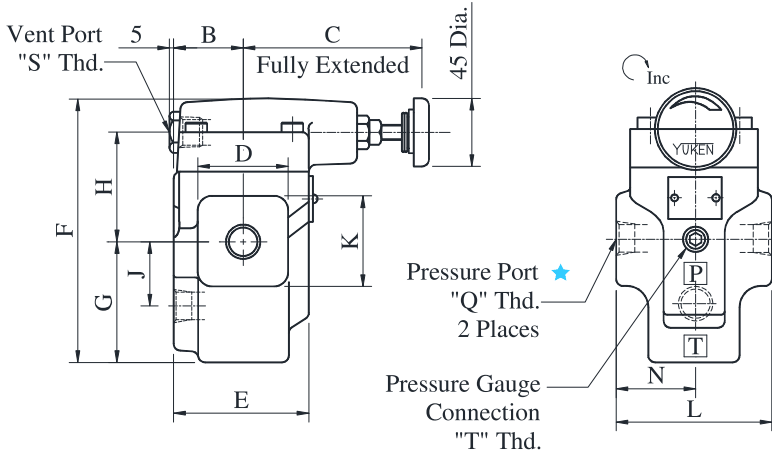
● **BT-06P-※-3280**

DIMENSIONS IN MILLIMETRES



Model Number	"Q" Thd.	"S" Thd.	"T" Thd.
BT-06P-※-3280	3/4 BSP.F	3/8 BSP.F	1/4 BSP. Tr

Model Number	A	B	C	D	E	F
BT-06	75	40	105	52	78	150.5



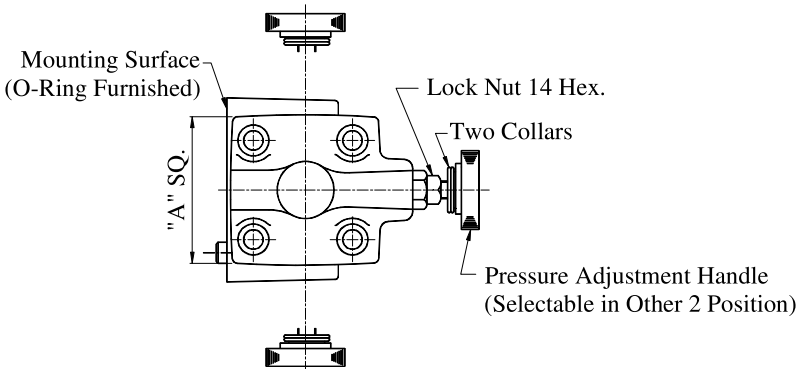
Model Number	G	H	J	K	L	N
BT-06	68.5	62	36	52	90	45

★ There are two threaded connection pressure ports. They can be connected each other in-line: one as inlet and the other as an outlet or the valve can be used by plugging one of the pressure port.

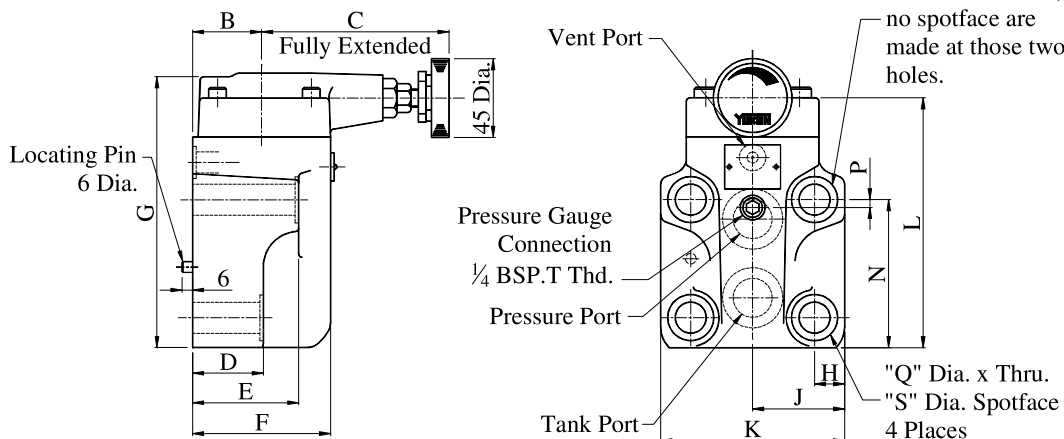
03
● **BG-06 P-※ 32**
10

Model Number	A	B	C	D	E	F	G
BG-03	75	40	105	57	78	78	137
BG-06	75	40	105	40	60	78	161
BG-10	85	45	101	47	67	87.5	195

Mounting Surface
BG-03: ISO 6264 AR-06-2-A
BG-06: ISO 6264 AS-08-2-A
BG-10: ISO 6264 AT-10-2-A



Model Number	H	J	K	L
BG-03	14.1	41	82	117
BG-06	17	52	104	141
BG-10	20.7	62	124	175



Model Number	N	P	Q	S
BG-03	77	22	13.5	21
BG-06	83.5	4.5	17.5	26
BG-10	110	6	21.5	32

Attachment

Mounting Bolts

Valve Model Number	Socket Head Cap Screw	Qty Nos.	Bolt Kit Ordering Code
BG-03	M12 x 70Lg., M12 x 95Lg.	2 each	BK BG-03-10
BG-06	M16 x 60Lg., M16 x 80Lg.	2 each	BK BG-06-10
BG-10	M20 x 70Lg., M20 x 90Lg.	2 each	BK BG-10-10

Sub-Plate

Valve Model Number	Sub-plate Model Number	Piping Size	Mass Kg.
BG-03	BGM-03-3080	3/8 BSP.F	2.4
	BGM-03X-3080	1/2 BSP.F	3.1
BG-06	BGM-06-3080	3/4 BSP.F	4.7
	BGM-06X-3080	1 BSP.F	5.7
BG-10	BGM-10-3080	1-1/4 BSP.F	8.4
	BGM-10X-3080	1-1/2 BSP.F	10.3

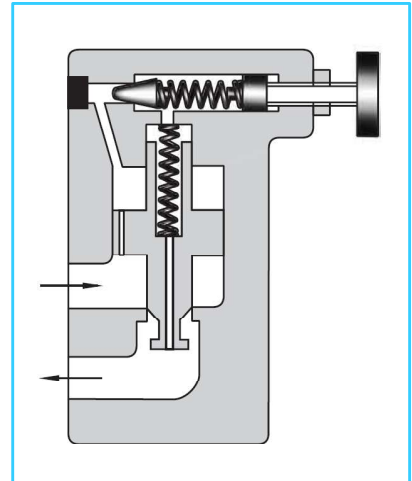
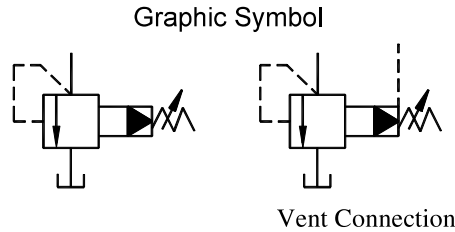
- Sub-plates are available. Specify sub-plate model from the table above. When sub-plates are not used, the mounting surface should have a good machined finish.

Instructions

- If a remote control relief valve is used in the vent circuit, see page 253 in EIC-C-1001-0. In addition, if the internal volume of the vent line is too large, chattering is likely to occur. Thus, as far as possible reduce the inside Dia. and the length of the pipe.
- To adjust the pressure, loosen the lock nut and turn the handle slowly clockwise for higher pressure or anti-clockwise for lower pressures. After adjustments, do not forget to tighten the lock nut.
- Pressure is limited by collars fitted. If a working pressure cannot be attained, remove some collars. One collar is equivalent to 100 Kg/cm².
- Piping of the Tank line should not be connected to any tank line of the other valves, but connected directly to the reservoir.
- With a small flow, the setting pressure may be unstable. Use models numbered 03 and 06 with a flow rate 8 L/min. and model 10 with 15 L/min.
- There are two threaded connection pressure ports. They can be connected each other in-line one as inlet and the other as an outlet or the valve can be used by plugging one of the pressure ports.

Pilot Operated Relief Valves

These valves protect the hydraulic system from excessive pressure, and can be used to maintain constant pressure in a hydraulic system.
Remote control and unloading are permitted by vent circuits.



Specifications

Model Number		Max. Operating Pressure Kgf/cm ²	Pres. Adj. Range Kgf/cm ²	Max. Flow L/min.	Mass Kg.	
Threaded Connection	Sub-plate Mounting				BT type	BG type
-	BG-03-※-32	250	* ~ 250	100	-	4.7
BT-06-※-3280	BG-06-※-32			200	5	5.6
-	BG-10-※-32			400	-	8.7

* Refer to the Minimum adjustment Pressure characteristics on Page 273.

Model Number Designation

F-	B	T	-03	P	-V	-32	※
Special Seal	Series Number	Type of Mounting	Valve Size	Plunger Type	High Venting Pres. Feature	Design Number	Design Standards
F: Special Seals for Phosphate Ester type Fluids. (omit if not required)	B: Pilot Operated Relief Valves	T: Threaded Connections	06	P: Pull Type	V: For High Venting Pressure Feature (Omit if not required)	32	80
		G: Sub-plate Mounting	03			32	—
			06			32	
			10			32	

Use high venting pressure type to reduce the response time from unload to onload.