

Direct Type Relief Valves

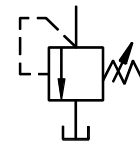
This valve is used in hydraulic system to prevent damage due to over pressure and to adjust the maximum system pressure of small capacity.



Specifications

| Model Number | Max. Operating Pressure Kg/cm ² | Pres. Adj. Range Kg/cm ² | Max. Flow L/min. | Mass Kg. |
|-------------------|--|-------------------------------------|------------------|----------|
| YBT-02-※-※-1080 | 160 | (Note) | 20 | 1.5 |
| YBT-02-F-※-※-1080 | | | | 1.5 |
| YBG-02-※-10 | | | | 1.6 |

Graphic Symbol



Note: Refer to the Model Number Designation.

Model Number Designation

| F- | YB | T | -02 | -F | -X | -B | -10 | ※ |
|--|---|-----------------------------------|------------|---|---|---|---------------|------------------|
| Special Seals | Series Number | Type of Mounting | Valve Size | Flange Mounting | Port Size | Pres. Adj. Range Kg/cm ² | Design Number | Design Standards |
| F: Special Seals for Phosphate Ester Type Fluids. (Omit if not required) | YB: Direct Type Relief Valves | T: Threaded Connections | 02 | F: Flange Mounting (Omit if not Required) | None: Std. 1/4 X: 3/8 | A: 3 ~ 40 B: * ~ 70 C: 35 ~ 140 D: * ~ 160 E: 2 ~ 10 | 10 | 80 |
| | | G: Sub-Plate Mounting | | -- | | | -- | 10 |

* Refer to the Minimum Adjustment Pressure Characteristics.

Instructions

- To adjust the pressure, loosen the lock nut and slowly turn the handle clockwise for higher pressure or anti-clockwise for lower pressures. After adjustments, do not forget to tighten the lock nut.
- Piping of the tank line should not be connected to any tank line of the other valves, but connected directly to the tank.

Attachment

- Mounting Bolts

| Valve Model | Socket Head Cap Screw | Qty. | Bolt Kit Ordering Code |
|-------------|-----------------------|------|------------------------|
| YBG-02 | M5 x 55Lg. | 4 | BKYBG-02-10 |

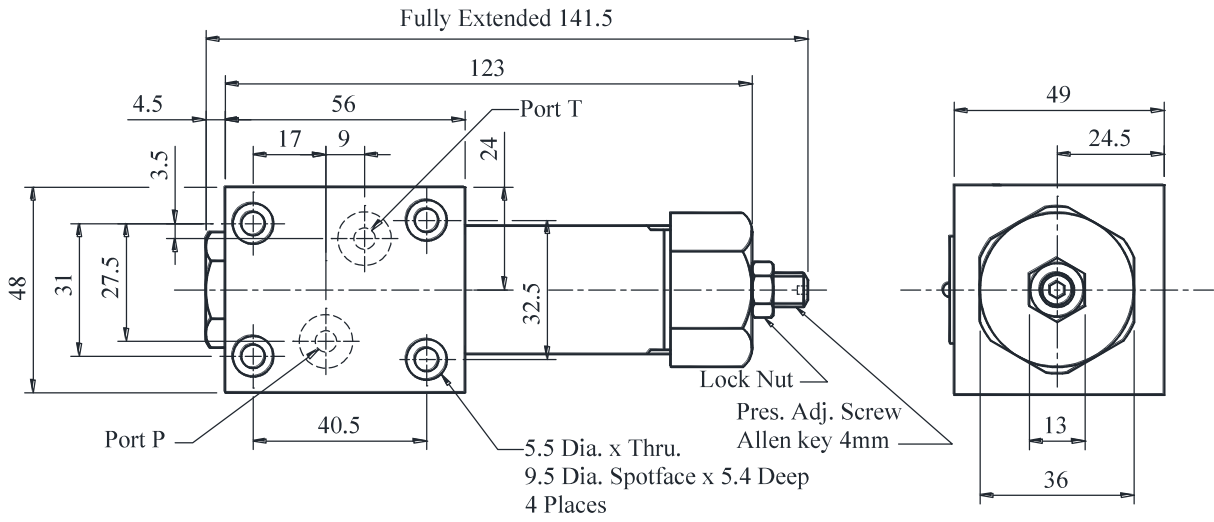
Sub-plate

| Valves Model | Sub - Plate Model Number | Thread Size | Mass Kg. |
|--------------|--------------------------|-------------|----------|
| YBG-02 | YBGM-02-1080 | 1/4 BSP.F | 0.7 |

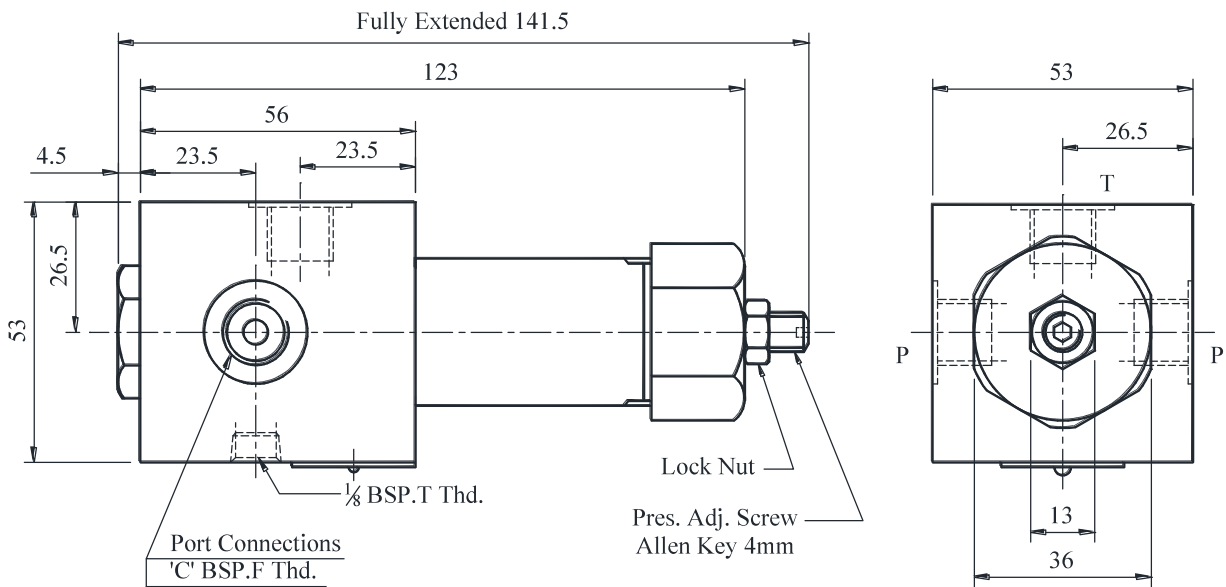
- Sub-plates are available, specify sub-plate model number from the table above. When sub-plates are not used the mounting surface should have a good machined finish.

● YBG-02-**-**-10

DIMENSIONS IN MILLIMETRES



● YBT-02-**-**-1080



| Model Numbers | 'C' Thd. |
|---------------|----------|
| YBT-02-F | 1/4 |
| YBG-02-F-X | 3/8 |