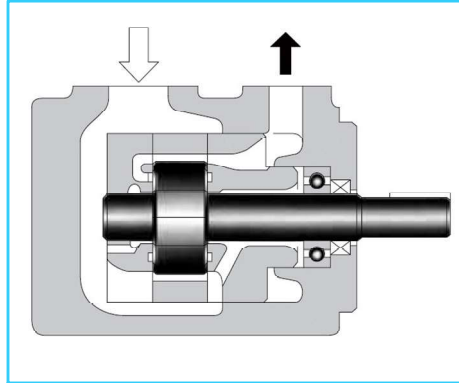
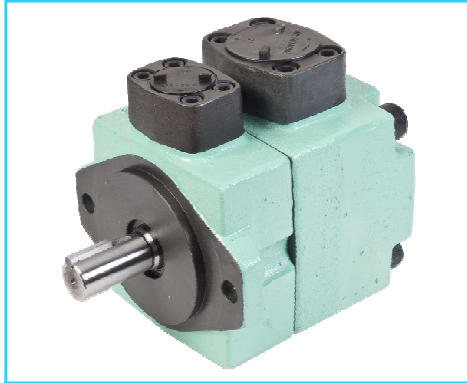


PV2R Series Single Vane Pumps

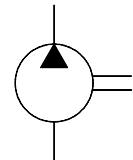
These pumps have been developed especially for low noise operation. To comply with a wide range of applications for instance the injection moulding machine. PV2R Series Single Pumps provide wide range of delivery volume [5.8-237.0 cm³/rev.] for the pumps.

The main internal spare parts of the pumps are built in as cartridge kit.

Therefore, the replacement can be easily done by simply changing the cartridges.



Graphic Symbol



Specifications

Model Number	Geometric Displacement cm ³ /rev.	Max. Operating Pressure Kg/cm ²							Output Flow & Input Power	Shaft Speed Range r/min.	
		Petroleum Based Oils			Water Containing Fluids			Synthetic Fluids		Max.	Min.
		Specially Specified ^{*6}	Antiwear Type	R & O Type	Antiwear Type ^{*6} Water Glycols	Water Glycols	Water in Oil Emulsions	Phosphate Esters			
PV2R1 - 6	5.8	210 ^{*5}	175 ^{*5}	160	160	70	70	160	Refer Page 154, 155 & 156	1800 ^{*3} (1200)	750 ^{*4}
PV2R1 - 8	8.0										
PV2R1 - 10	9.4										
PV2R1 - 12	12.2										
PV2R1 - 14	13.7										
PV2R1 - 17	16.6										
PV2R1 - 19	18.6										
PV2R1 - 23	22.7										
PV2R1 - 25	25.3	160	160								
PV2R2 - 26	26.6	210	175	140	160	70	70	140	Refer Page 156, 157 & 158	1800 ^{*3} (1200)	600 ^{*4}
PV2R2 - 33	33.3										
PV2R2 - 41	41.3										
PV2R2 - 47	47.2										
PV2R2 - 53	52.5										
PV2R2 - 59	58.2										
PV2R2 - 65	64.7										
PV2R3 - 52	52.2	210	175	140	160	70	70	140	Refer Page 158 & 159	1800 ^{*3} (1200)	600
PV2R3 - 60	59.6										
PV2R3 - 66	66.3										
PV2R3 - 76	76.4										
PV2R3 - 94	93.6										
PV2R3 - 116	115.6	160	160						1800 ^{*1} (1200) ^{*3}		
PV2R4 - 136	136	175	175	140	160	70	70	140	Refer Page 159 & 160	1800 ^{*2} (1200) ^{*3}	600
PV2R4 - 153	153										
PV2R4 - 184	184										
PV2R4 - 200	201										
PV2R4 - 237	237										

*1 If PV2R3 - 116 is used at speed above 1700 r/min. the suction pressure is limited to 0 Kg/cm².
 *2 If PV2R4 - 237 is used at speed above 1700 r/min. the suction pressure is limited to 0.13 Kg/cm²
 *3 If phosphate ester or water containing fluids are used, the maximum speed is limited to 1200 r/min.
 *4 For starting at low speed, the maximum viscosity is limited. For details, see Hydraulic Fluids.
 *5 For pressure above 160 Kg/cm² raise the speed over 1450 r/min.
 *6 For the brands of 'Antiwear type water glycol' and 'Specially specified' petroleum based oils see the 'Hydraulic Fluids' in EIC-N-1001.

Model Number Designation

F-	PV2R1	-6	-L	-R	A	A	-43
Special Seals	Series Number	Nominal Displacement	Type of Mounting	Shaft * Rotation	Discharge Port Position	Suction Port Position	Design Number
				As Viewed from Shaft End			
F: For Phosphate Ester Type Fluids (Omit if not required)	PV2R1	6, 8 10, 12 14, 17 19, 23 25, 31	L: Foot Mounting	R: Clockwise (Normal)	A: Upward (Normal) B: Bottom R: Right L: Left	A: Upward (Normal) B: Bottom R: Right L: Left	43
	PV2R2	26, 33, 41, 47 53, 59 65					40
	PV2R3	52, 60, 66, 76, 94, 116	F: Flange Mounting				31
	PV2R4	136, 153 184, 200 237					30

* Available to supply pump with anti-clockwise rotation. Consult Yuken for details.

* For instructions regarding changing the port positions, consult YUKEN INDIA LTD.

Pipe Flange kits

Pipe flange Kits are available. When ordering, specify kits from the table below.

Pump Model Number	Name of Port	Pipe Flange Kit Numbers
		Threaded Connection
PV2R1	Suction	F5-08-A-1080
	Discharge	F5-04-A-1080
PV2R2	Suction	F5-10-A-1080
	Discharge	F5-06-A-1080
PV2R3	Suction	F5-16-A-1080
	Discharge	F5-10-A-1080
PV2R4	Suction	-----
	Discharge	F5-12-A-1080

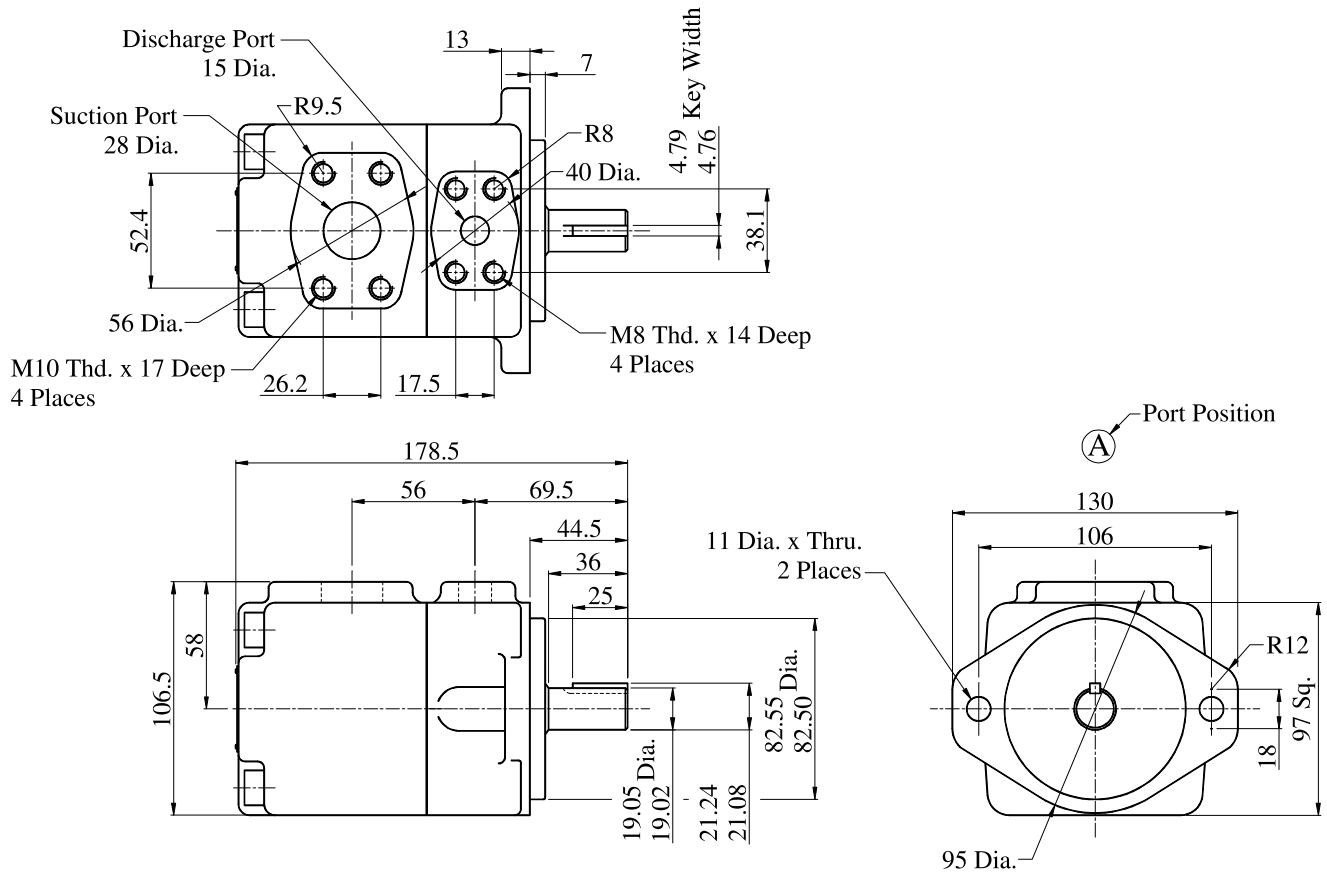
Note: Special seals (Viton Seals) are required when phosphate ester type fluids are used. (Prefix “F” before model code of pipe flange kit numbers when ordering).

Mass

Model Number	Mass Kg.	
	Flange Mtg.	Foot Mtg.
PV2R1	9.0	11.2
PV2R2	19.0	23.3
PV2R3	36.7	46.7
PV2R4	68.5	93.5

■ PV2R1-※-F-RAA-43

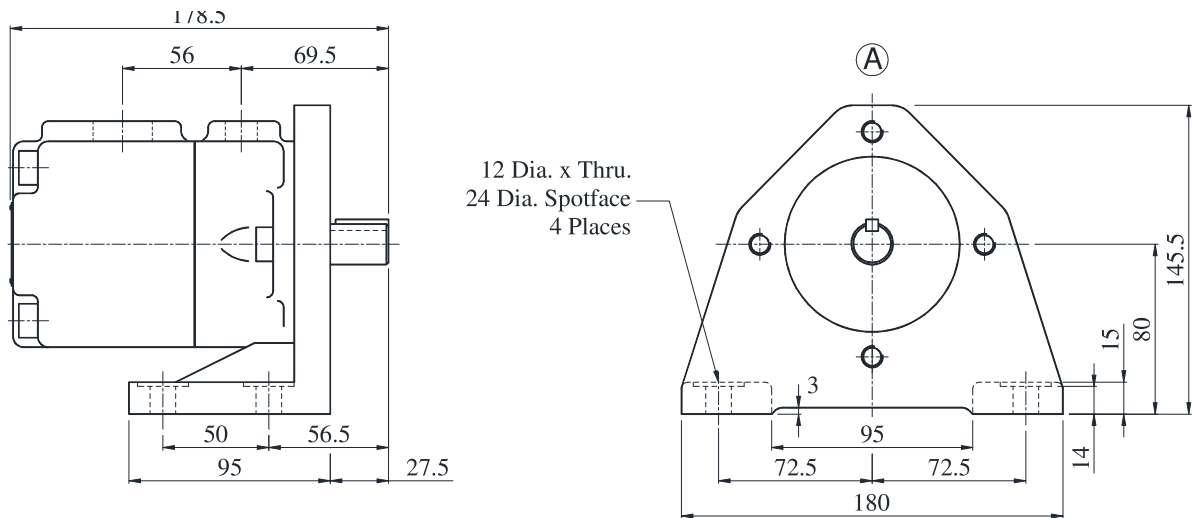
● Flange Mounting



DIMENSIONS IN MILLIMETRES

■ PV2R1-※-L-RAA-43

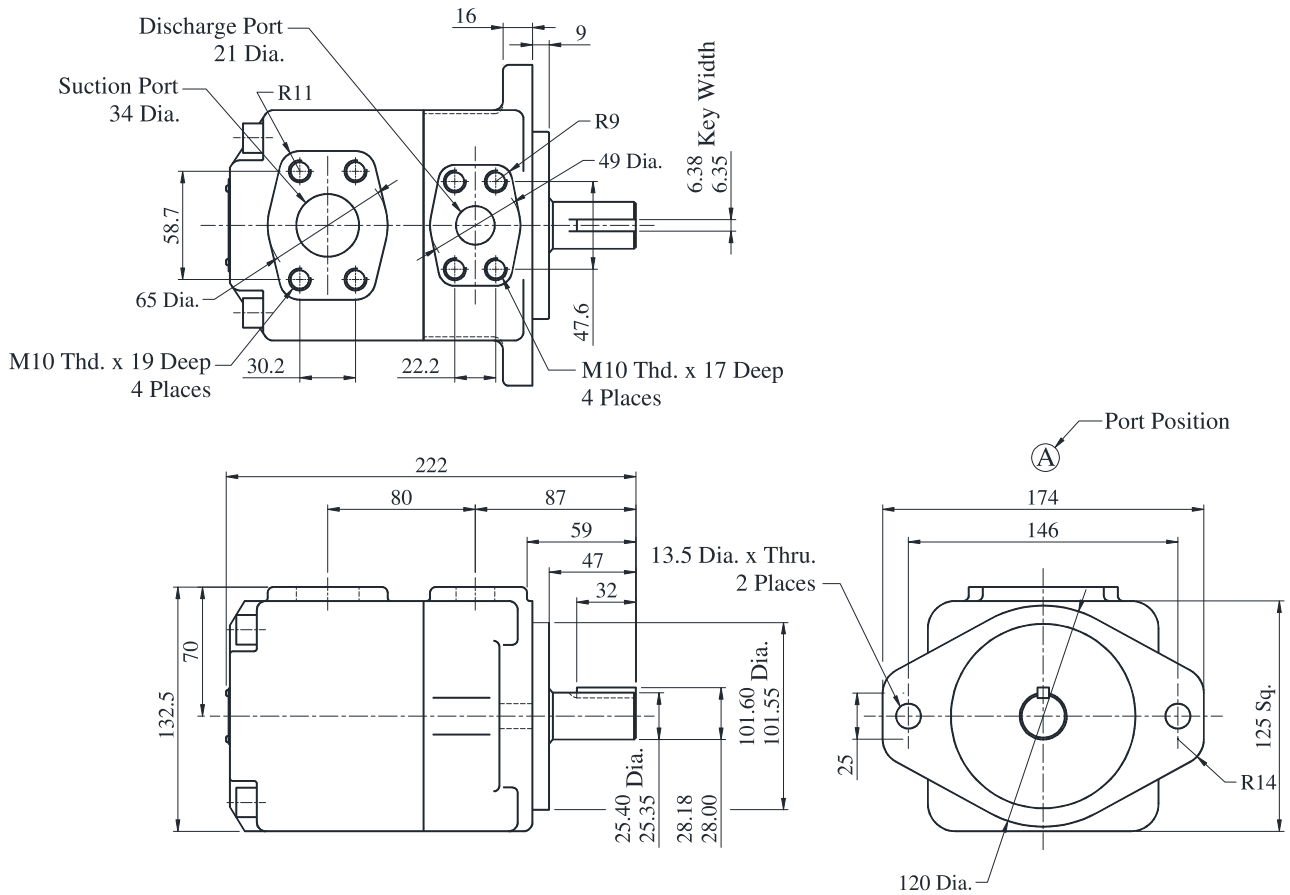
● Foot Mounting



● For other dimensions, refer to “Flange Mtg”.

PV2R2-※-F-RAA-40

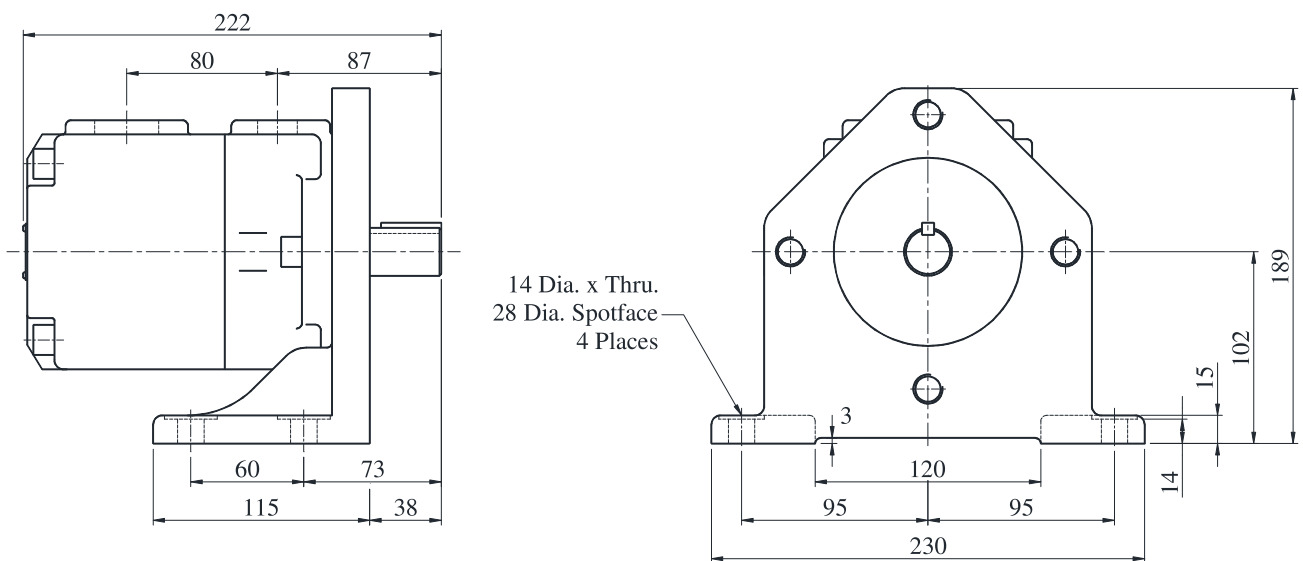
● **Flange Mounting**



DIMENSIONS IN MILLIMETRES

PV2R2-※-L-RAA-40

● **Foot Mounting**



● For other dimensions, refer to “Flange Mtg”.